

A3100 Chassis with Expansion Backplane

ClearCube's A-Series PC blades and chassis combine the best of both worlds: the enhanced security, manageability, and simplicity of the centralized ClearCube solution with the value of a desktop PC.

The unique mechanical architecture of the A-Series hardware is designed for simplicity, resulting in ease of installation and maintenance while supporting industry-standard Intel Pentium 4 processors, Intel Core 2 Duo, Intel Core 2 Quad, and the Microsoft Windows Vista® Business edition operating system.

The A3100 chassis contains no cooling fans or active electronics; all active components are contained within the A-Series blades. Each chassis contains two A/C line cord connections. One A/C cord powers blades 1 through 5 and the other A/C cord powers blades 6 through 10. This approach eliminates the need to use dedicated, high-current electrical power circuits (standard 100-240 VAC inputs suffice). Individual blades can be added or removed from the chassis without affecting the operation of others.



New Features, Greater Performance

The A3100 chassis features the Expansion Backplane (EBP) to manage cabling of Ethernet, PCoIP, and USP connectivity. The EBP, along with the ClearCube Sentral™ management software, is used to identify the blade slot and chassis ID that an A-Series blade is occupying. Integrated power cable retention clips are included on the rear of the chassis for each power cable. The A3100 can be mounted in a standard 19" rack with the included rack mounting ears or with the optional chassis rapid mounting kit.

Support Quad-Monitor Over IP

Working with ClearCube's I9400 Series I/Port and the A1410 PC blades—the industry's first quad-monitor over IP solution—the A3100 helps shatter the distance barrier by supporting as many as four monitors at once with simultaneous full screen, full motion video at high resolution.

Specifications:

General: 6U Chassis has the capacity for ten A-Series blades; fused AC power distribution with one line cord connection for every 5 blades; integrated retention clips for each A/C input cord; front bezel removes without tools for easy access to blades (blade power indicators shine through the bezel at the bottom)

DATA SHEET

Connections: Twenty 10/100/1000 Ethernet connections (RJ-45)
Ten PCoIP (RJ-45)
Two AC Power Connectors (Blades 1-5; Blades 6-10)

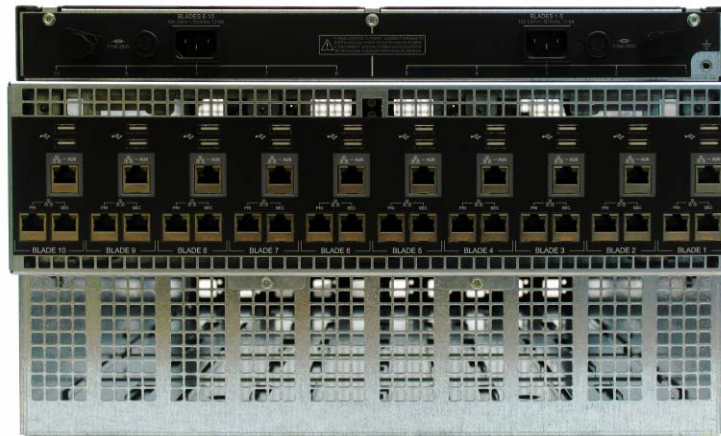
Dimensions: 10.5" (26.7 cm) x 29.8" (75.7 cm) x 19.0" (48.3 cm)

Weight: 38 lbs. (17.2 kg) empty
173 lbs. (78.5 kg) fully loaded

Power Supply: Universal 100 - 240 VAC, 50-60 Hz input

Environment: Standard office installation, 0-35° C

Regulatory Compliance: FCC/CSA Class A, UL1950, IEC950, CE

**Ordering Information**

Use one of the following part numbers to order your A3100 Chassis with EBP:

G0900011 – Chassis with Expansion Backplane

Power Cord (Required)

G060036A – North American Power Cord (Included)

G060020A – United Kingdom Power Cord

G060034A – European Power Cord

DDR 667, Non-ECC SDRAM

Model A3100 Datasheet – Rev. D