




## ClearCube PC Blade Selection Guide

This guide will help you select the right PC Blade for your application. All blade models bring the enhanced security, availability and manageability of centralized computing to a wide range of applications without performance tradeoffs. The following table outlines the features of ClearCube PC blade models.

Feature	ClearCube PC Blade		
	 Model R1300	 Model R2200	 Model A1010
Chassis Model	R4300	R4300	A3000
Density	112 blades per 42U rack	56 blades per 42U rack	70 blades per 42U rack
Size	3U, 8 blades per chassis	3U, 4 blades per chassis	6U, 10 blades per chassis
Chipset	Intel® 945G	Intel® E7525	Intel® 865G
System Bus Speed	1066 MHz <sup>1</sup>	800 MHz	800 MHz
CPU	Intel® Core™ 2 Duo (dual-core) Intel Pentium 4 with HyperThreading	Dual Intel Xeon® with Hyper-Threading	Intel Pentium 4 with HyperThreading
CPU Speed	Core 2 Duo: Up to 2.4 GHz Pentium 4: Up to 3.6 GHz	Up to 3.8 GHz	3.0 GHz
Memory	DDR2-667/533 Non-Reg, Non-ECC	DDR2-400 ECC, Registered	DDR-400 Non-Reg, Non-ECC
Hard Drive	Single SATA (3.0 Gb/s)	Single or Dual SATA (1.5 Gb/s)	Single SATA (1.5 Gb/s)
RAID	N/A	RAID 0 (Stripping) or RAID 1 (Mirroring) <sup>2</sup>	N/A
Graphics	Intel GMA 950 NVIDIA Quadro4 NVS285 <sup>3</sup>	NVIDIA Quadro4 NVS285 <sup>3</sup>	Integrated Intel® Extreme Graphics
Network Adapters	10/100/1000 Mb/s and 10/100 Mb/s	Dual 10/100/1000 Mb/s	Single 10/100 Mb/s
USB	USB 2.0 port on Blade front panel and rear of R4300 Chassis <sup>4</sup>	USB 2.0 port on Blade front panel and rear of R4300 Chassis <sup>4</sup>	2 USB 2.0 ports on rear of blade
USB Mass Storage Lockout	C/Port hardware based I/Port software based	C/Port hardware based I/Port software based	I/Port software based only
User Port Support	C/Port or I/Port	C/Port or I/Port	I/Port Only
Management	In-band and out-of-band	In-band and out-of-band	In-band Only
Hardware Remote Control	Yes	Yes	None
Software Remote Control	Yes	Yes	Yes
Desktop Virtualization Support	Yes	Yes	Yes
Microsoft Vista Capable	Yes	Yes	Yes
Microsoft Vista Premium Ready	Yes with C/Port	Yes with C/Port	No
Front Panel Indicators	Programmable LCD panel	Programmable LCD panel	On/Off power LED
Power source	Dual A/C inputs with redundant chassis power supply	Dual A/C inputs with redundant chassis power supply	Single A/C input
Power Supply	205 W universal input 100-240 VAC	305 W universal input 100-240 VAC	250 W universal input 100-240 VAC
Power/Reset Buttons	Front	Front	Rear
Nominal Power Consumption <sup>5</sup>	115-140 W	115-140 W	80-130 W

<sup>1</sup> Core 2 Duo system (front-side) bus speed is 1066 MHz; Pentium 4 system bus speed is 800 MHz  
<sup>2</sup> RAID support requires configuring the blade with dual hard drives  
<sup>3</sup> The Quadro4 graphics option can be combined with a C/Port and MVX to drive up to four monitors  
<sup>4</sup> Rear USB port support requires 44-pin interposer card on blade  
<sup>5</sup> Power consumption per blade under typical usage conditions



## ClearCube PC Blade Selection by Application

The key to a successful installation is properly aligning the PC blade model with your application requirements. The table below outlines the suggested PC blade model for different industry solutions. For specialized applications not listed below, contact your ClearCube account executive.

Industry Solution	Recommended PC Blade
<b>Government &amp; Education</b>	
Civilian Agencies	A1010
Command & Control	R1300, R2200
Education	A1010
Military Hospitals	R1300, A1010
Military Bases	All Models
Mobile & Remote Deployments	All Models
Multi-network Access	All Models
<b>Financial Services</b>	
Trading Floors <sup>1</sup>	R1300, R2200
Branch Banks	A1010
Disaster Recovery	R1300, R2200
Remote Computing & Offshore Dev.	All Models
Grid Computing	All Models
<b>Healthcare</b>	
Patient & Exam Rooms <sup>2</sup>	R1300, A1010
Nursing Stations	A1010
Emergency & Operating Rooms	R1300
Remote Clinics	A1010
Remote Medical Coding & Transcription	A1010
<b>Commercial &amp; Manufacturing</b>	
Call Centers	A1010
Clean Rooms	R1300, A1010
Manufacturing Lines	R1300, A1010
Oil & Gas	R1300, R2200
Transportation	All Models

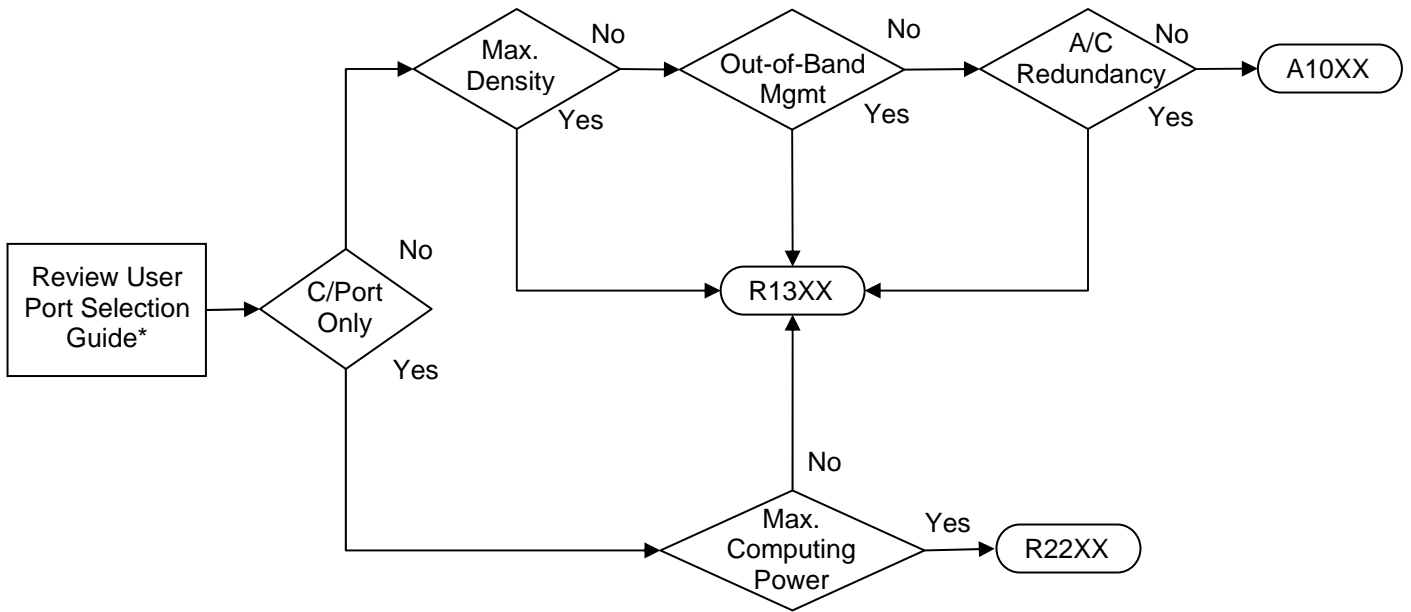
<sup>1</sup> See the User Port Selection Guide for multi-monitor support options

<sup>2</sup> See 'Deploying PACS with ClearCube PC Blades' solution paper on the ClearCube website for details

All documents referenced above can be located by searching for their name on the ClearCube website.



The blade selection flowchart below can assist you in determining the appropriate PC blade by answering some simple questions based on typical deployment considerations.



### ClearCube PC Blade Selection Flowchart

\*The User Port Selection Guide is located on the ClearCube Hardware Products web page.