

Model R1350 PC Blade

High-Performance Centralized Computing Solution with an Intel® Core™ Duo Power in a Blade Form Factor and Sentral™ Management Software

R1350 Blade PC

Featuring genuine Intel® Core™ 2 Duo processors, DDR2-667 memory, and PCI-Express® graphics, ClearCube® R1350 PC blades offer the highest performance and best manageability of any desktop blade computers available today.

ClearCube employs advanced thermal designs and cooling methods to deliver the latest Intel desktop processors in a blade computer format. Blade-cooling fans and high-volume chassis fans provide ample cooling, and since the ClearCube architecture centralizes the processors, users get full Core 2 Duo performance without the heat or fan noise of PCs at the desktops.

R1350 blades supports the direct connect C/Port technology as well as the extendable Teradici® PCoIP™ technology.

Full PC Experience-Over-IP

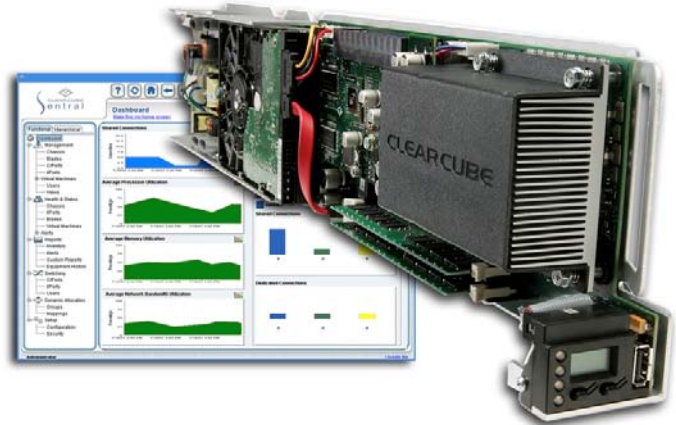
Working with the ClearCube I9400-series I/Port or the C7420 Digital Fiber C/Port, R1350 PC blades shatter the distance barrier by supporting two monitors at once with simultaneous full screen, full motion video, and full USB redirection over the network using the PCoIP™ protocol. The R1350 PC blade, in conjunction with the I9400 I/Port or the C7420 C/Port, can support standard digital video at resolutions up to 1600 × 1200 on each monitor.

Quad-Monitor Support, High-Quality Video

R1350 blades also offer a multi-video solution for applications demanding advanced graphics and quad-monitor displays. This option utilizes a special quad-capable PCI-Express video adapter based on the NVIDIA® Quadro® NVS graphics processor. The video adapter is an interchangeable mezzanine card that can be upgraded. The ClearView video driver, based on the award winning NVIDIA nView software, provides the graphical interface for setting up and configuring displays. The multi-video solution can support standard analog input monitors and digital input monitors at resolutions up to 1280 × 1024.

Desktop Virtualization

A virtualized R1350 blade gives IT administrators the ability to easily deploy and manage virtual desktops. Leveraging VMware Server from VMware, the ClearCube R1350 enables up to 5 users to simultaneously access a single blade, while receiving their complete desktop experience.



Powerful Performance, Simple and Secure

R1350 blades provide full desktop performance while increasing security and manageability of assets and data. Powered by ClearCube Sentral™ management software, the solution gives IT administrators easy and total control of their entire deployment of centralized infrastructure – from PC blades to virtual desktops, locally or remotely, and provides server-level availability (99.9% uptime) for end user computing.

Specifications

- General:** Intel 945G chipset with 1066 MHz FSB
Dual Ethernet ports (Primary 10/100/1000 Mbps, Secondary 10/100 Mbps)
Phoenix BIOS supports PXE and Phoenix Phlash
Local USB 2.0 port on blade front panel (port on R4300 chassis also accessible)
- Components:** Integrated Intel GMA 950 graphics controller
Optional NVIDIA Quadro NVS285 PCI-Express Graphics Card with 128 MB VRAM
Supports ClearCube v5120 remote graphics options
Intel Core 2 Duo processor
SATA 3.0 Gbps hard drive
Dual-channel, DDR2 667/533, non-registered, non-ECC memory
Microsoft Windows XP Pro or Windows Vista® Business edition
Linux Ready or Windows 2003 Server also available
**See Ordering Information Below for Available Configurations*
- Power Supply:** 205 W
- Dimensions:** 4.7" H x 23.5" D x 1.9" W (11.9 cm x 59.7 cm x 4.8 cm)
Eight blades fit in single chassis (standard 19" rack width)
- Weight:** 6 pounds (2.7 kilograms)
- Environment:** Stationary office installation, 0° to 35° C

Ordering Information

Use the following part numbers to order your R1350 PC Blade:

G0900016 – Model R1350 PC Blade

Video (Optional)

G0800016 – v5120 PCoIP remote graphics adapter

Processor (Required)

G932136-186 – Core 2 Duo E6300 (1.86 GHz, 4M cache)

G932136-240 – Core 2 Duo E6600 (2.4 GHz, 4M cache)

Hard Disk Drive (Required)

G910022-080 – 80 GB, 7200 RPM SATA 3.0Gbps HDD

Memory Modules (Required – Blade contains two (2) DIMM slots – two (2) modules of equal capacity required per PC blade)

G920007-1000 – 1 GB DDR2-667, Non-ECC SDRAM

G920017-2000 – 2 GB DDR2-667, Non-ECC SDRAM

Operating System (Required)

G053052 – Windows XP Professional SP2 English

G053030 – No OS Installed, Linux Ready

Video Options

G0800016 – V5120 Digital Dual Video Host Card