

BIOS 45 Flash Instructions

This document covers the process for flashing the BIOS on a ClearCube system to BIOS Version 45. This BIOS flash does the following:

1. Fixes PS2 mouse and keyboard issues experience in pre-Windows systems (i.e. DOS).
2. Enables support of both Single and Dual Monitors under a unified BIOS.

Installation Process Using a Virtual Boot Floppy:

1. Open Task Builder within the PowerQuest Deploy Center 5.0 Program Menu.
2. Create a new Task, and call it BIOS45. Select the “Reboot” command from the left hand “Available Operations” menu.
3. In the right hand “Task” window, select the “Reboot” command that you selected in Step 2.
4. In the bottom section on the right hand side (circled in red)

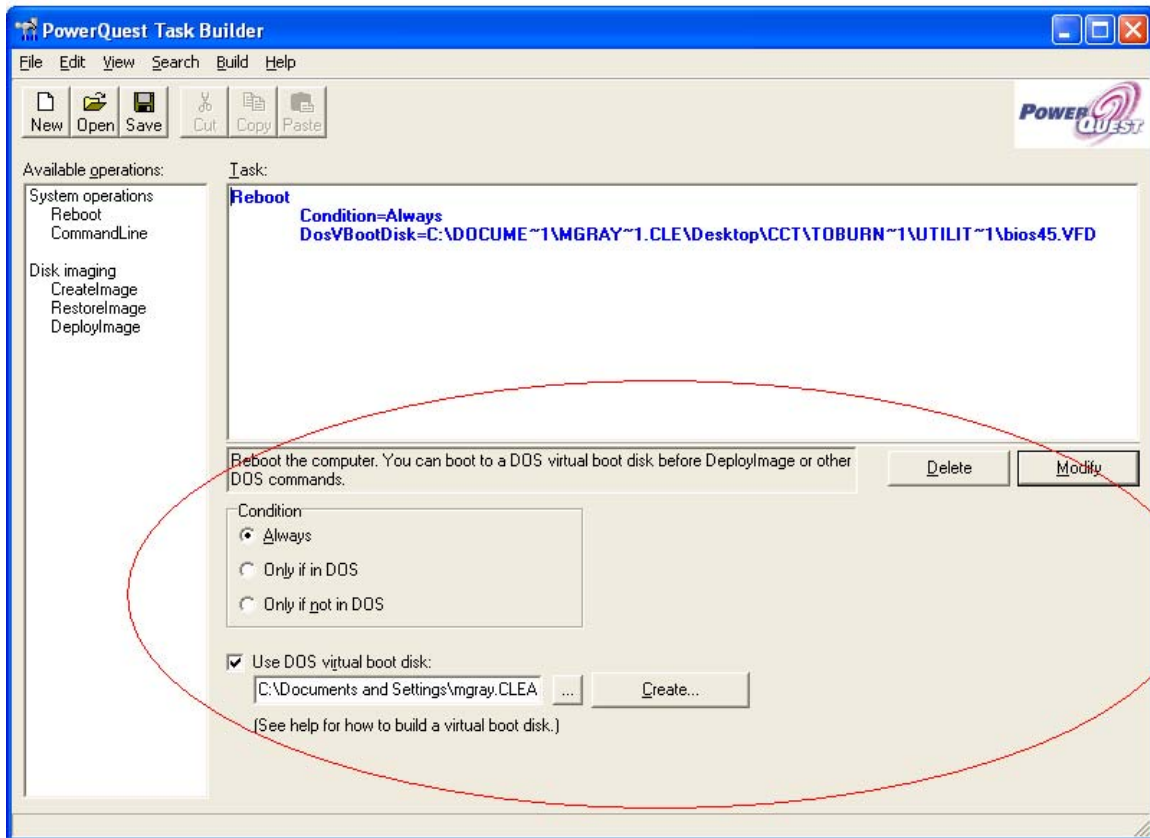


Figure 1

5. Identify the location of the BIOS45 Virtual Boot Floppy Image.
 - a. If you are running the BIOS45 Task on the system where the task is being built, the path for the DOS virtual disk is absolute (see Figure 1). Once the Virtual Boot Floppy location is identified, save the Task.
 - b. If you are running the BIOS45 Task Executable on a remote system, pulling the virtual disk from a shared network resource, make sure the DOS virtual boot disk is in a UNC format (see Figure 2). Once the Virtual Boot Floppy location is identified, save the Task to the network share where the Virtual Boot Floppy is located.

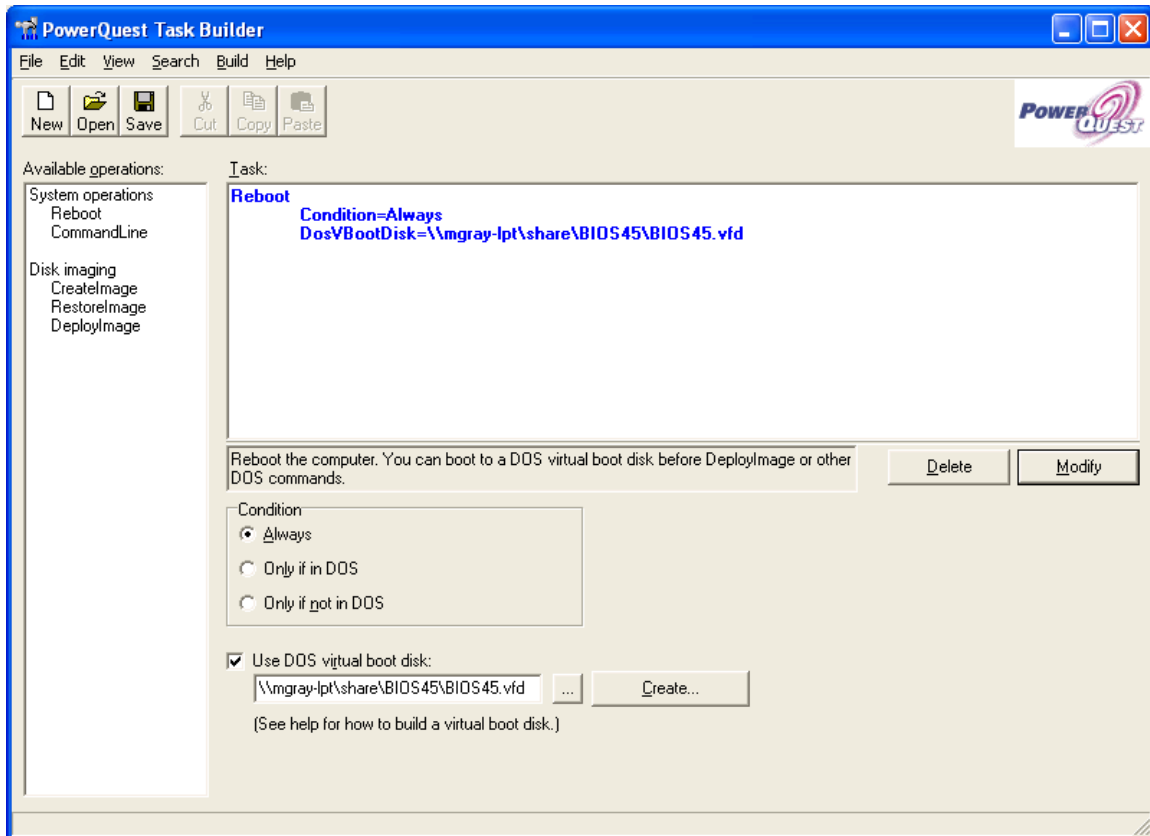


Figure 2

6. Once the task is created, you will need to then build an Executable that will be used to launch the task. Once you are at the main PowerQuest Task Builder menu, select from the top menu bar “Build” and drag down to “Executables”.
7. When you get to the “Build executable file” window, check to make sure the location of the executable is within the share you created for the task.
 - a. If you are running the executable from the local machine (as in Step 5a), the path listings will be similar to Figure 3.
 - b. If you are running the executable from a network share (as in Step 5b), the path listings will be similar to Figure 3, except you will use UNC directory structures.

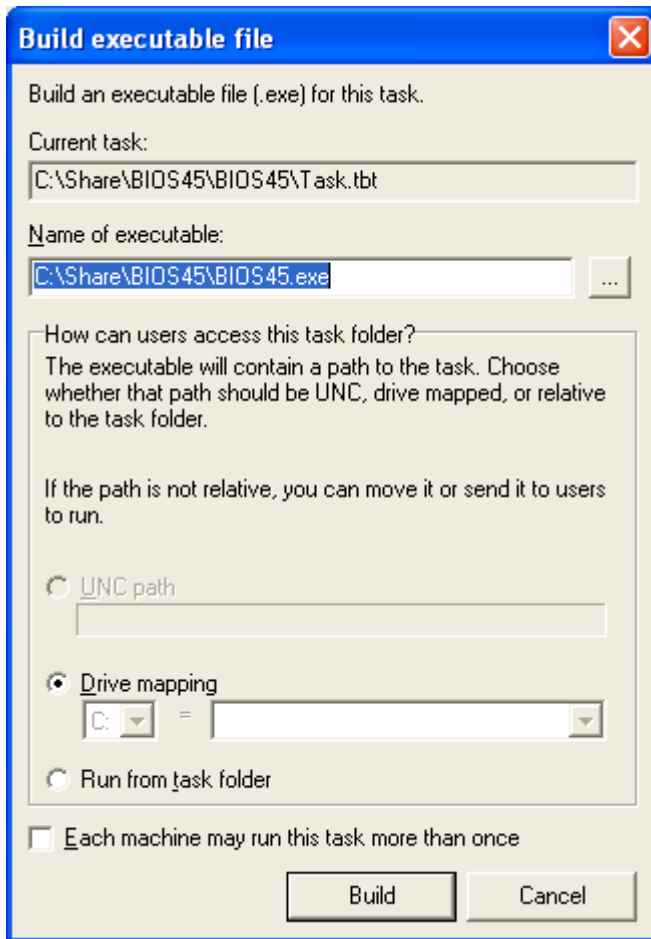


Figure 3

8. Once the executable is built, you then will simply double-click on it (either from the local system or from a network share). This will launch the Task, reboot the system, and load the Virtual Boot Floppy with the BIOS 45 software on it.
9. When the system reboots, it will go through the boot sequence and bring up the following listing:

A:
10. At the A:\ prompt, type in the command:

A:\phlash16.exe /mfg
11. This will start the flash of the BIOS. At the end of the flash, the system will reboot back into the local operating system.
12. You are now finished.

Installation Process Using a Floppy Disk

1. Place a 3.5" floppy disk in a USB floppy drive connected either at the front USB connection at the blade, or at one of the USB connections at the C/Port.
2. Open the VF Editor from the PowerQuest Deploy Center 5.0 Program Menu.
3. At the VF Editor main window, click "File", "Open" and then browse the Virtual Boot Floppy image that has the BIOS 45 flash information.
4. When the image is open, click on "Disk" (top menu), and drag down to "Format and Write Disk". This will format a 3.5" floppy, and write the contents of the Virtual Boot Floppy on it.
5. After the 3.5" floppy has the data written on it, you can reboot the computer, with the 3.5" floppy still in it. This will cause the system to reboot to the floppy disk.
6. When the system reboots, it will go through the boot sequence and bring up the following listing:

A:

7. At the A:\ prompt, type in the command:

A:\phlash16.exe /mfg

8. This will start the flash of the BIOS. At the end of the flash, the system will reboot back into the local operating system.
9. You are now finished.