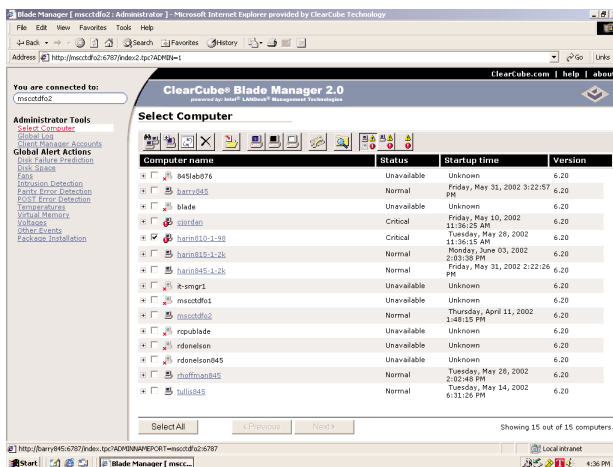




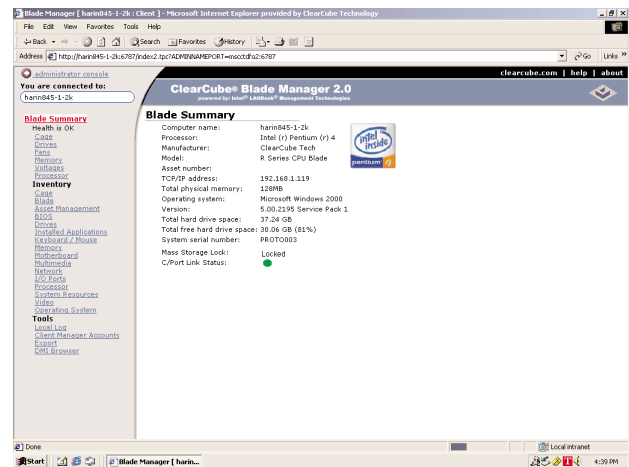
## ClearCube Blade Manager 2.1

### A Component of the ClearCube Management Suite

Blade Manager 2.1 is a part of the ClearCube Management Suite (CMS), which includes a variety of tools that make the most of ClearCube's centralized client-blade architecture. Blade Manager gives you the ability to manage your assets and monitor the health of your Client Blades, Cages and C/Ports. Automatic alerts that respond to programmable thresholds give you instant notification of hardware problems. Blade Manager also lets you take action to remotely wake-up, reboot, and shutdown Blades. Blade Manager's administrator view lets you manage up to 250 users from a browser-based interface. For applications with thousands of users Blade Manager integrates with ClearCube Management Console for full-scale enterprise management.



Administrator View (Multiple Client Blades)



Client View (Single Client Blade)

## Key Features

### Systems Management:

- Remotely manage up to 250 individual users
- Wake-up, reboot, and shutdown Blades remotely
- Program unique Blade front panel IDs

### Health Monitoring:

- Browse real-time status information on hardware including fan speed, power supply voltages, processor temperature, disk and memory use
- Receive and log automatic alerts based on programmable thresholds

### Security Enforcement:

- Block users' ability to connect external mass storage devices
- Alert and log hardware and software changes

### Asset Management:

- List and export your inventory of hardware components with specifications
- List and export your installed applications, BIOS data and OS details

### Standards Based:

- Wired for Management 2.0, SNMP, CIM, DMI 2.0s, WBEM, and Microsoft WMI
- Based on Intel LANDesk Management Technologies
- Console support for Intel LANDesk, Tivoli, HP OpenView, and CA Unicenter via Intel Application Integration Modules

**System Requirements:** Managed Blades can run Windows 2000 or XP. Administrators' Blades or other administrator computers must run Windows 2000 or Windows XP with Internet Explorer 5.5 or later.

**Ordering Information:** The Blade Manager agent comes installed on all ClearCube CPU Blades. The Blade Manager administrator software is included with every ClearCube system purchase.