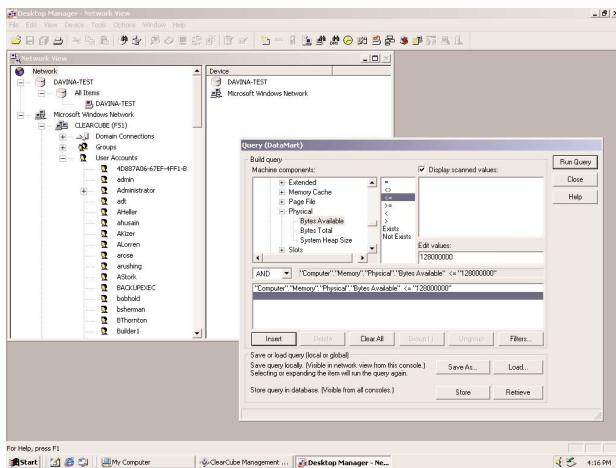




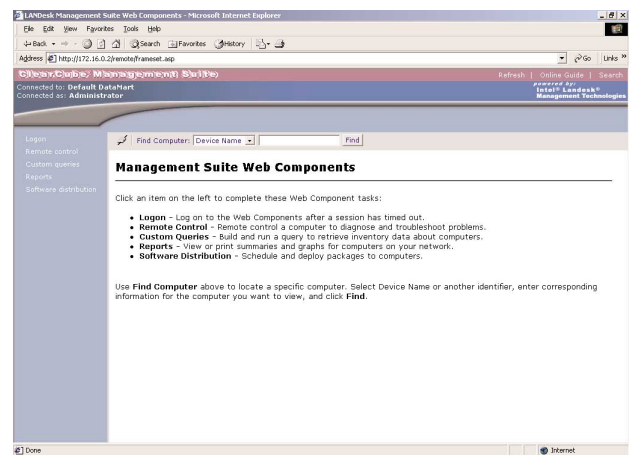
ClearCube Management Console 2.0

A Component of the ClearCube Management Suite

Management Console 2.0 is a key part of the ClearCube Management Suite (CMS), which includes a variety of tools that make the most of ClearCube's centralized client-blade architecture. Management Console is an advanced systems management tool based on Intel's LANDesk management technology that gives you complete control over your computing assets. Report generation, remote control, software distribution, and asset management are just some of the capabilities of Management Console 2.0.



Application View



Browser View

Key Features

Enterprise-Level Systems Management:

- Remotely manage thousands of individual users
- Automated node and asset discovery
- Alerting and change detection
- Access detailed profiles of Blade configurations

Remote Control:

- Take control of any user's desktop over the LAN
- Wake-up, reboot, and shutdown Blades remotely
- Remote file transfer and remote execute

Application and Web-based Management:

- Local application runs on administrator Blades
- Browser-based control accesses remote control, inventory capture, software distribution scheduling, and query features

Software Distribution and Metering:

- Schedule single-file MSI (Microsoft Windows Installer) packages for remote installation
- Remote uninstall
- Silent background installation option
- Application healing
- Monitor software use for license enforcement

Detailed Query and Reporting Tools:

- Hardware and software inventory reporting
- Easy to use query tools

Database Support:

- Up to 250 users: Microsoft Access 97 (included)
- 250 or more users: Microsoft SQL 2000 SP1 or Oracle 8i
- Data can be exported to other applications

System Requirements: A dedicated server Blade or other server running Windows 2000 Server with Microsoft Data Access Components (MDAC) 2.6 or later and Microsoft IIS 5.0. Internet Explorer 5.5 or later.

Ordering Information: Management Console 2.0 is available stand-alone or as part of the ClearCube Management Suite.