

RMC 1.36 Update Tool

RMC_1.36:

Use the RMC_1.36 utility to update the firmware on the management card found in the cage that has the green led lit up labeled “Eth”. The RMC_1.36 firmware improves the communication between the RMC and the Switch Manager software. If using firmware prior to 1.36 it is recommended to update to this version.

Note: Updating the RMC firmware will not impact the end user work performance during the upgrade.

How to determine the RMC firmware version:

To determine the RMC firmware version launch Switch Manager and login. After logging in a java applet appear. On the bottom of the java applet you will find the RMC version.

Requirements:

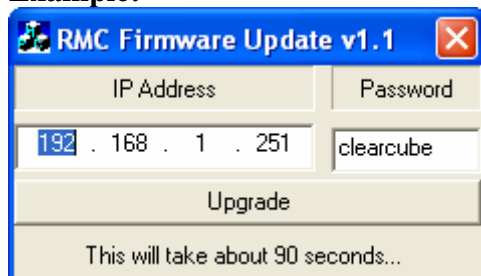
RMC_1.36 Utility

Know the IP address of the Remote Management Card

Update instructions:

1. First download the utility from the hardware section labeled RMC Firmware found at <http://support.clearcube.com/downloads/hardware.htm>.
2. Once you have downloaded the utility extract all files into the same folder.
3. Once that is done run the “rmctool.exe” by double clicking the file.
4. Next the utility will then launch.
5. Input the IP address of the RMC that you want to upgrade.
6. Input the password of the RMC. (Default password is *clearcube*)
7. Then click “upgrade”.
8. After the upgrade process is done you will see a message notifying a successful upgrade.

Example:



If you have any questions or comment please call ClearCube Support at 866-652-3400 or email Support at support@clearcube.com.