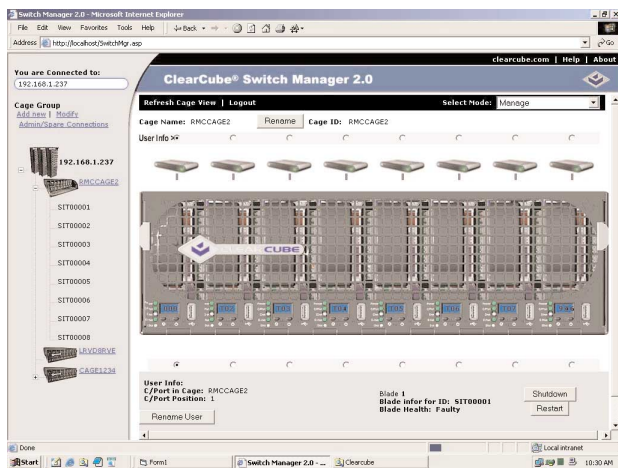




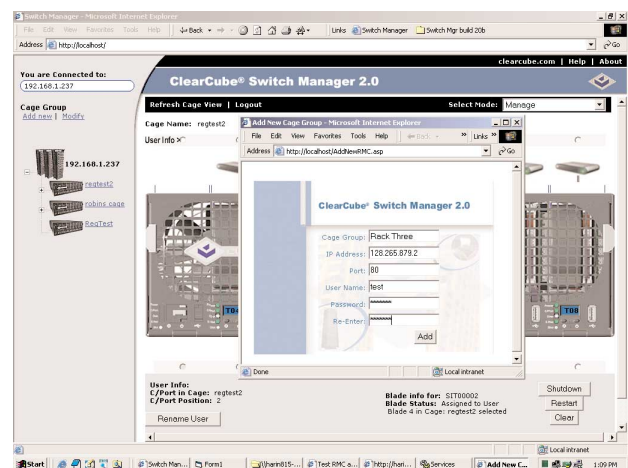
ClearCube Switch Manager 2.0

A Component of the ClearCube Management Suite

Switch Manager 2.0 is a key part of the ClearCube Management Suite (CMS), which includes a variety of tools that make the most of ClearCube's centralized architecture. Switch Manager provides a browser-based graphical management interface for Blades and Cages that use the Blade Switching BackPack. Switch Manager enables several capabilities that are unique to the ClearCube architecture such as the ability to eliminate downtime by immediately switching a user to a spare blade in the event of a failure. Switch Manager also gives an administrator the ability to share video or take full hardware control of any Blade within a defined group of Cages. Blade pooling and sharing is also now possible with Switch Manager's ability to connect the eight Blades in a Cage to the C/Ports in any combination. Switch Manager can control a BackPack from anywhere in the world.



Cage View



Rack View

Key Features

Manage Mode:

- Graphically select Cages & Blades to view status
- Shut-down, reboot, or power-up Blades
- Configure Cage Group, Cage, and Blade names

Spare Switching Mode:

- Remotely switch a user from their primary Blade to a single spare CPU Blade in the same Cage or in another linked Cage
- View the spare daisy-chain cable connections that link multiple Cages with Blade Switching BackPacks

Remote Control Modes:

- Administrator Mode: Connect a single C/Port to any Blade within a defined group of Cages
- Supervisor Mode: Lets an administrator share any user's video screen within a group of Cages whether or not the OS on the blade is running
- Software Remote Control: Link to Management Console's software-based remote control utility to take over any Blade via a LAN connection from anywhere in the world

8x8 Switching Mode:

- Switch any Blade to any C/Port within a Cage

System Requirements: Switch Manager and Management Console require a dedicated Blade or other server running the Windows 2000 Server operating system with Microsoft IIS. Administrator machines require Internet Explorer 5.5 or later.

Ordering Information: Switch Manager 2.0 is available as a stand-alone application for basic switching functions, however full functionality requires installation of ClearCube Management Console 2.0. Switch Manager can also be purchased as part of the ClearCube Management Suite.