

Topic: Setting The Power Management Tab For USB In Windows XP
Component(s) Affected: Windows XP, Switch Manager
Date: August 01, 2002

OVERVIEW / ENVIRONMENT

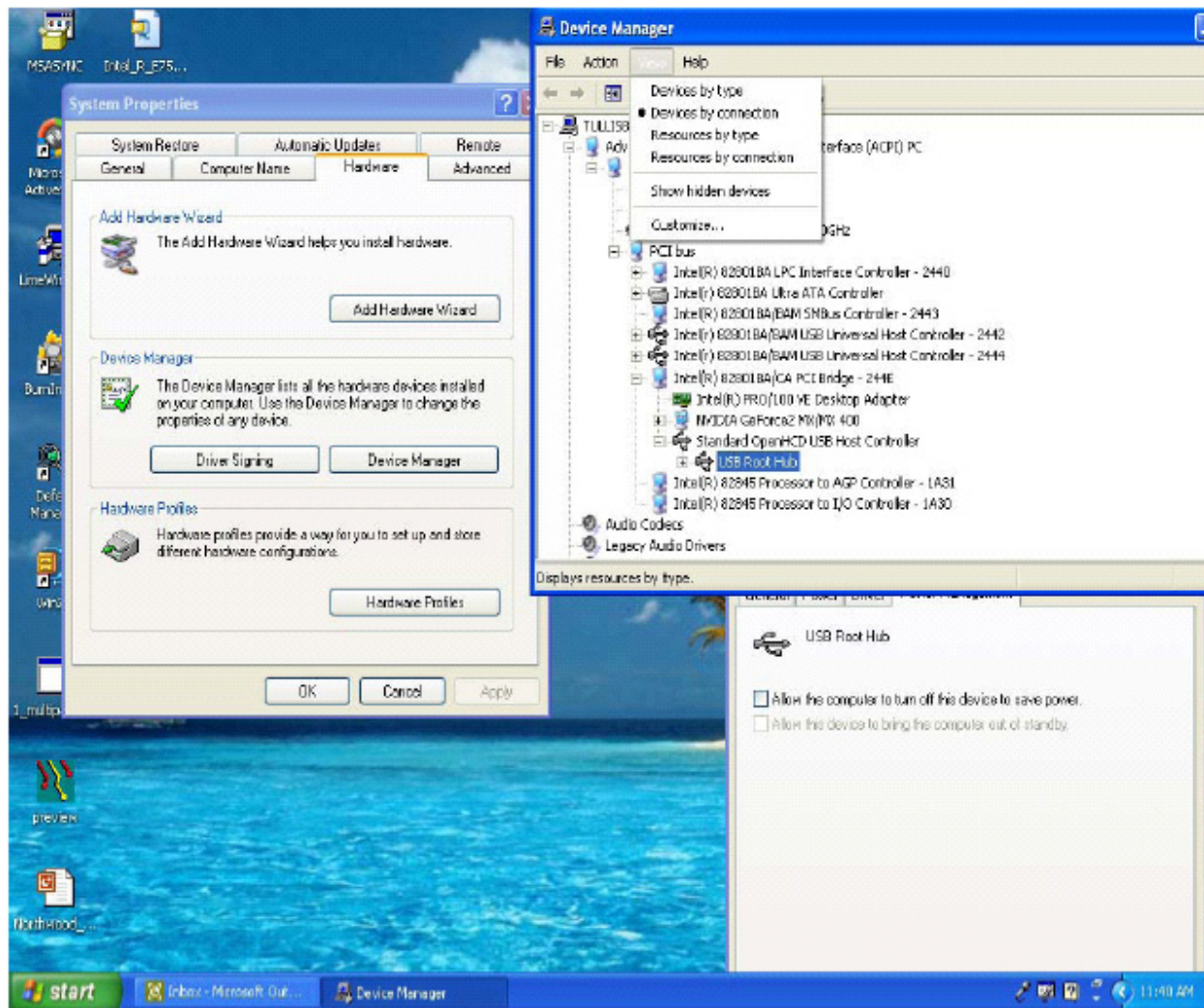
Windows XP adds the ability to set the power management for a USB Root Hub. This was not available in previous versions of Windows. Enabling the power management can cause a problem with the USB OHCI controller and blade switching under Windows XP. The problem manifests itself as losing USB devices on the C/Port. This could happen as a result of reboot, disconnecting the CAT5 cable attached to the C/Port, or switching the Blade via ClearCube's Switch Manager software.

RESOLUTION

To resolve this problem, the Power Management tab on the OHCI controller must be unchecked. To uncheck this tab:

1. Open the Control Panel.
2. Select **System**.
3. Select the **Hardware** tab.
4. Select **Device Manager**.
5. From the **View** menu, select **Devices by connection**.
6. Select **Advanced Configuration and Power Management Interface (ACPI) PC**.
7. Select **Microsoft ACPI-Compliant System**.
8. Select **PCI Bus**.
9. Select **Intel 82801 BA/CA PCI Bridge – 244E**.
10. Select **Standard OpenHCD USB Host Controller**.
11. Right-click on **USB Root Hub**.
12. Select **Properties**.
13. Select the **Power Management** tab.
14. Uncheck the box: Allow the computer to turn off this device to save power.

To view the window containing the checkbox, please see the screen capture on the next page.



For more information, please contact ClearCube technical support.

support@clearcube.com
support.clearcube.com
 (866) 652-3400
 +1 (512) 652-3400

Email address for ClearCube Technical Support
 ClearCube Support Website
 Direct line in the US
 Direct line from outside the US