

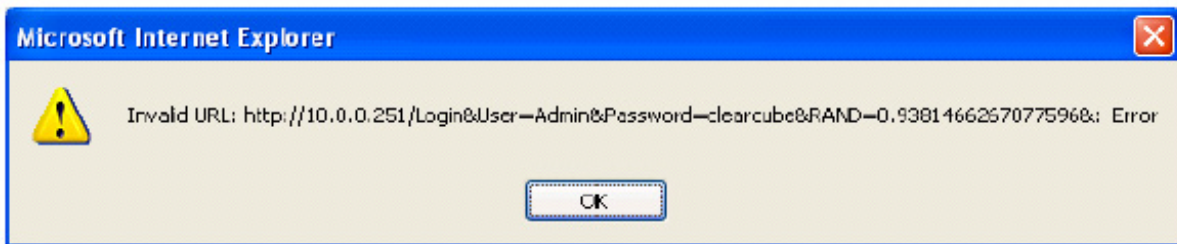
**Topic:** Connection Errors When Updating a Newly Created Cage Group  
**Component(s) Affected:** ClearCube Switch Manager  
**Date:** April 7, 2003

---

## OVERVIEW / ENVIRONMENT

---

When trying to add a Cage Group to Switch Manager, the administrator receives a browser error regarding an invalid URL. The error message is shown in *Figure 1*.



*Figure 1 Browser Error Message*

---

## RESOLUTION

---

Click **OK** in the error message box shown in *Figure 1*. Another error message box, shown in *Figure 2*, is shown.



*Figure 2 Second Error Message*

Click **OK** to return to Switch Manager. This error occurs typically on browsers that have been set up to connect to websites through a Proxy Server. To resolve this error, the administrator must configure the browser to bypass the proxy server for access to the Remote Management Card (RMC) in the ClearCube Cage Group. To do this, follow these instructions:

1. Open the Proxy Settings by clicking on Tools and then **Internet Options** on the top menu bar of Internet Explorer.
2. At the Internet Options window, click on the **Connections** tab, and then click the **LAN Settings** button at the bottom of the window, as shown in *Figure 3*.

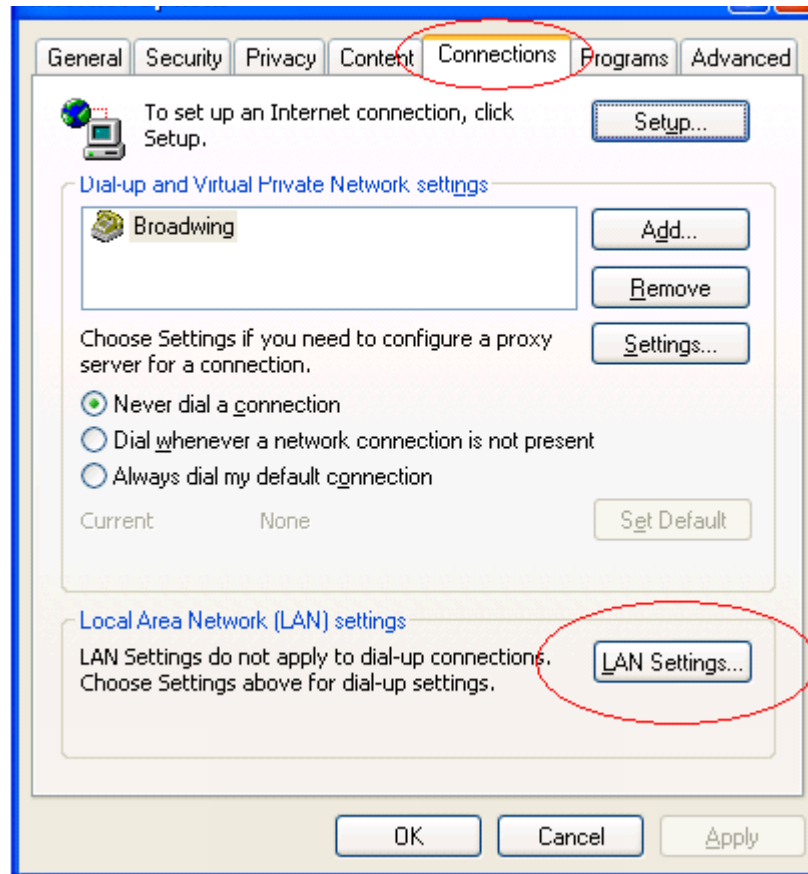


Figure 3 Internet Options Window

3. Make sure the **Bypass proxy server for local addresses** box is checked in the **Local Area Network (LAN) Settings** window, as shown in Figure 4.
4. After checking the box in Step 3, click the **Advanced** button.

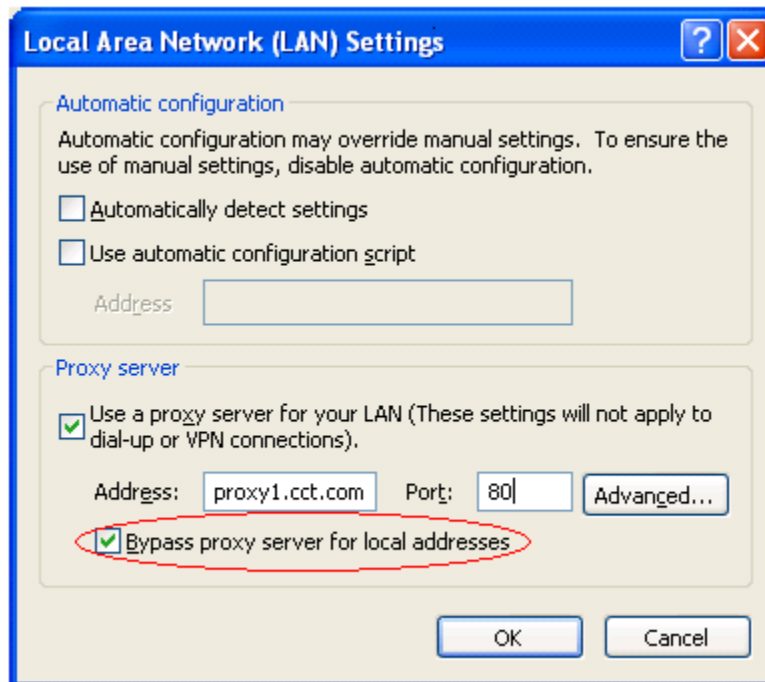


Figure 4 Local Area Network (LAN) Settings Window

5. In the Proxy Settings window, enter the IP address of the RMC in the **Exceptions** section. In Figure 5, the IP address of the RMC is 10.0.0.251. You need to set this number to the IP address of *your* RMC.

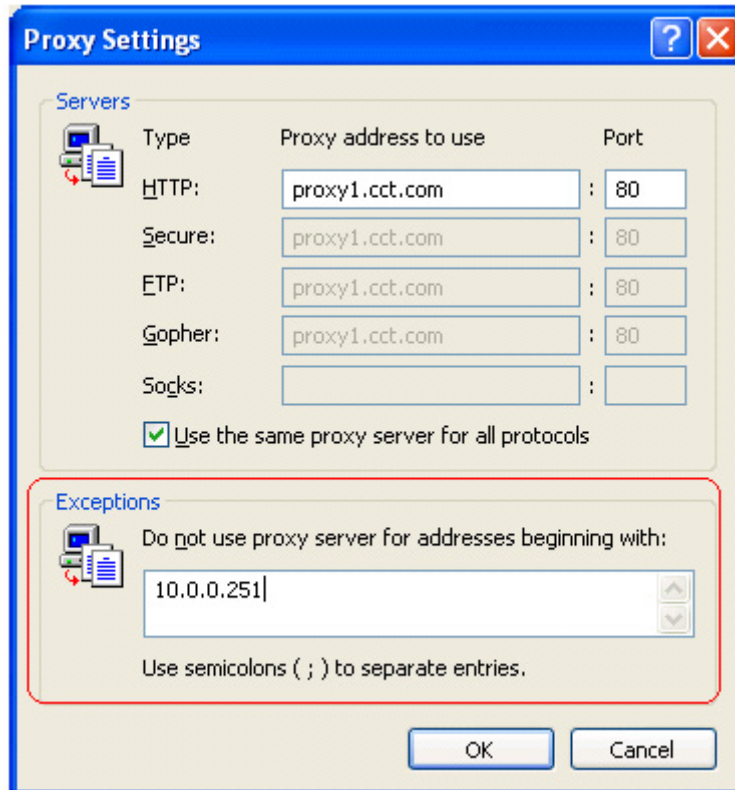


Figure 5 Proxy Settings Window

6. Click **OK** until all windows are closed.

For more information, please contact ClearCube technical support.

[support@clearcube.com](mailto:support@clearcube.com)  
[support.clearcube.com](http://support.clearcube.com)  
(866) 652-3400  
+1 (512) 652-3400

Email address for ClearCube Technical Support  
ClearCube Support Website  
Direct line in the US  
Direct line from outside the US