

**Topic:** Configuring PXE Multicast Settings  
**Component(s) Affected:** PowerQuest ControlCenter  
**Date:** June 05, 2003

---

## OVERVIEW / ENVIRONMENT

---

When setting up a PXE server, certain parameters can be configured to enable the use of IP Multicast. This document outlines the steps to accomplish this.

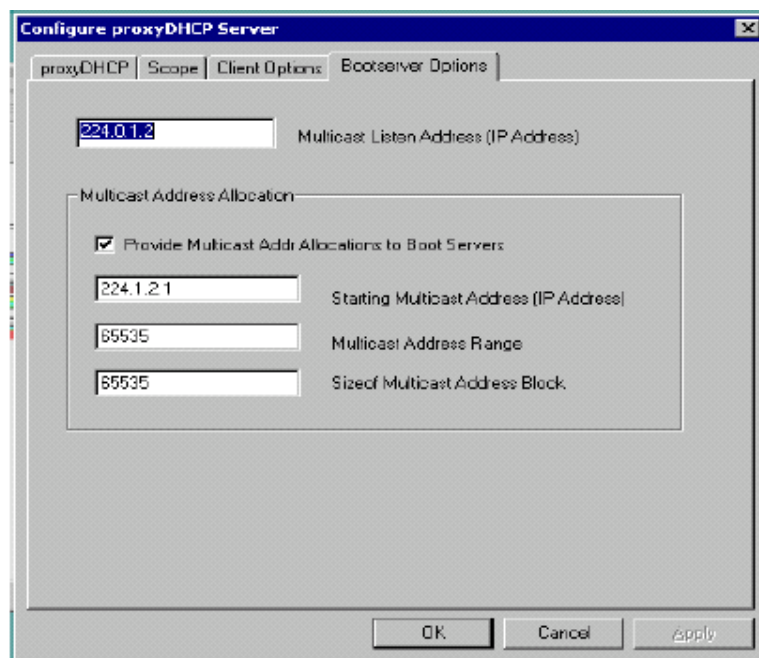
---

## DETAILED DESCRIPTION

---

Use the following procedure to configure the appropriate multicast setting on a PXE server.

1. Open the PowerQuest ControlCenter PXE Server application.
2. Right-click on **ProxyDHCP Server**.
3. Choose **Configure ProxyDHCP Server**.
4. Click on the **Bootserver Options** tab.
5. Enter the settings as shown in *Figure 1* and click **OK**.



*Figure 1 Bootserver Options*

6. Right-click on **Boot Server** and choose **Configure Boot Server**.
7. Click on the **General Options** tab.
8. Enter the settings as shown in *Figure 2* and click **OK**.

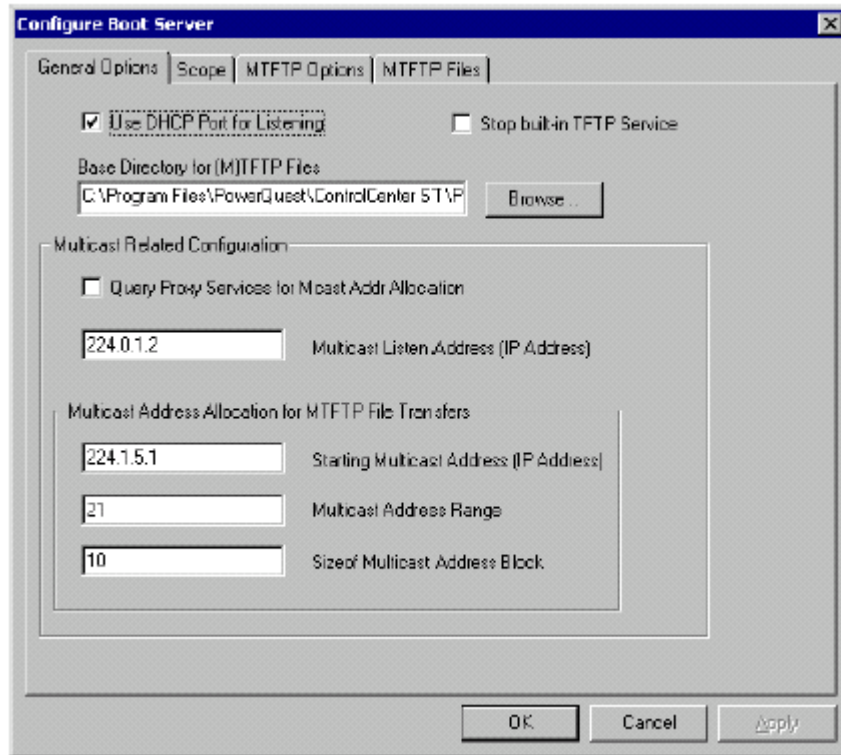


Figure 2 Bootserver General Options

For more information, please contact ClearCube technical support.

[support@clearcube.com](mailto:support@clearcube.com)  
[support.clearcube.com](http://support.clearcube.com)  
(866) 652-3400  
+1 (512) 652-3400

Email address for ClearCube Technical Support  
ClearCube Support Website  
Direct line in the US  
Direct line from outside the US