

## Overview

### Package Contents

- CD5011 ZERO+ Client
- Power adapter and power cable
- This *Quick Start Guide*

### Features

The pictures below show the features on the front and rear of the CD5011 ZERO+ Client.

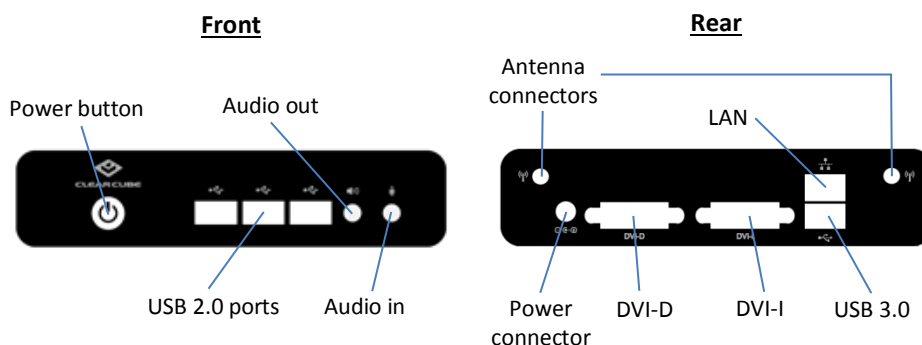


Figure 1. Front and rear of ZERO+ Client

### ZERO+ Client Overview

A *ZERO+ Client* is a remote computing device that connects a user's monitors, keyboard, mouse, speakers, and other peripherals to remote computers and to virtual desktops (VMs). As shown below, computing resources are typically located in remote data centers.

ZERO+ Clients use a remote connection protocol to enable users to work on a blade or VM as if it is a local PC. See the documentation for the remote protocol application that you use for additional information.

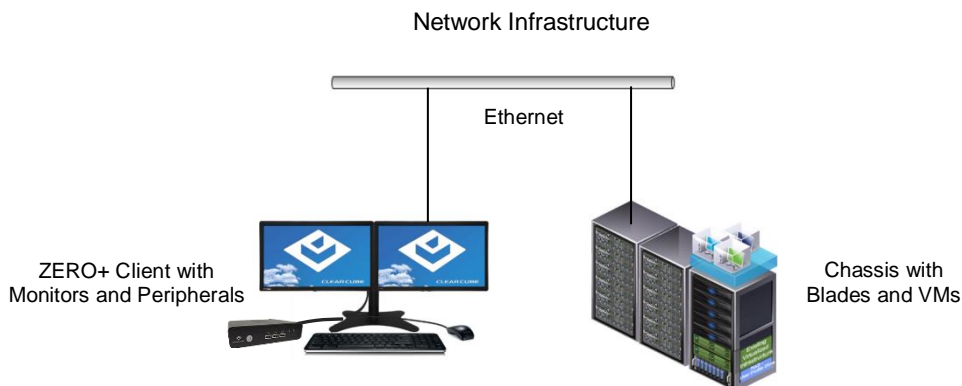


Figure 2. Overview of ZERO+ Client architecture

## ZERO+ Client Setup

### Network Requirements

The list below shows inbound ports to open for ZERO+ Client communication and management.

TCP/UDP	Port	Application
TCP	22	SSH, secure ZERO+ Client communication (if enabled)
TCP	23	ZERO+ Client communication using (if enabled)
TCP/UDP	80	HTTP, ZERO+ Client management access (if enabled)
TCP	443	HTTPS, ZERO+ Client management access (if enabled)

### Setting up a ZERO+ Client

The steps below show how to set up a ZERO+ client.

Step	Action
1	Carefully unpack the ZERO+ Client and components. Ensure that you have the following items: <ul style="list-style-type: none"> <li>• Power cord (included)</li> <li>• USB mouse</li> <li>• USB keyboard</li> <li>• DVI monitor(s)</li> </ul>
2	Connect a USB keyboard and mouse to the ZERO+ Client (be sure that USB 2.0 and 3.0 connectors are connected to appropriate ports).
3	Connect an Ethernet cable to the Ethernet port on the rear of the ZERO+ Client and to the Ethernet port on the remote compute device or network device (such as a network switch).
4	Optionally, connect any peripherals to the ZERO+ Client. If you purchased a ZERO+ Client with an internal WLAN card, attach the included antennae to the rear of ZERO+ Client.

*Continued on next page*

## ZERO+ Client Setup, Continued

### Setting up a ZERO+ Client (continued)

Step	Action
5	Connect the included power cord and AC adapter, and then plug the adapter into the rear of the ZERO+ Client. Continue by plugging the power cord into an AC power outlet.
6	Power on the ZERO+ Client by pressing the power button.

You can now use a remote connection protocol to connect to a remote computing device.

### Cloud Desktop OS Configuration

Cloud Desktop OS is the operating system included with CD5011 ZERO+ Clients. See the *Cloud Desktop Quick Start Guide*, included in your shipment, for details about setting up and configuring Cloud Desktop OS. The quick start guide is also available from the ClearCube Support site ([www.clearcube.com/support/](http://www.clearcube.com/support/)). From the Software drop-down menu, click **Cloud Desktop OS**.

### Connecting to Wireless Networks

Your ZERO+ Client includes an internal wireless LAN (WLAN, or Wi-Fi) card and antennae. The table below shows how to connect to wireless networks (instructions assume that wireless network infrastructure is in place).

Step	Action
1	From Cloud Desktop OS, press <b>CTRL+ALT+w</b> on your keyboard. <b>Result:</b> a dialog box appears listing available wireless networks.
2	Click a wireless network listed in the Visible Wi-Fi networks area. <b>Result:</b> if a password is required, a dialog box appears. Otherwise, the ZERO+ Client joins the wireless network
3	If a password is requested, enter the wireless network password in the <b>Password</b> text box (optionally, select <b>Remember this network</b> to log in automatically). Click <b>Join</b> to join the wireless network.

*Continued on next page*

## ZERO+ Client Setup, Continued

### Connecting to Wireless Networks (continued)

The picture and list below detail wireless options available from the list of visible networks.

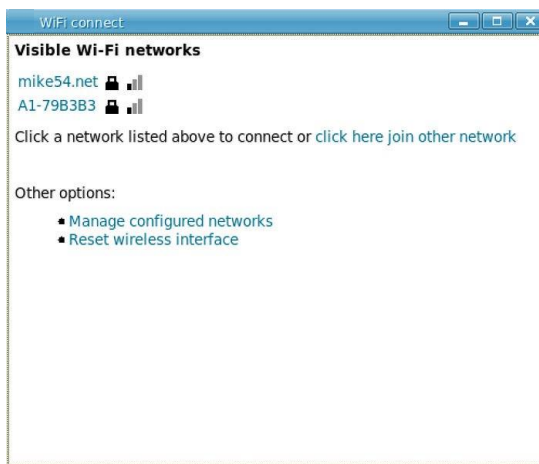


Figure 3. Visible Wi-Fi networks list and options

- Connect to a hidden network**  
 Administrators can prevent networks from appearing in the list of networks displayed after pressing the network hotkey (**CTRL+ALT+w**). To connect to a network that is not displayed, click the **click here to join other network** link. Click the network to connect to, then type the network name (SSID) and password. (From the management menus, you can change or disable this hotkey.)  
  
 To disable this hotkey from Cloud Desktop OS, click **Input > Keyboard > Hotkeys**. Clear all values from the **Show and connect to available WiFi networks** field, making sure that the field is empty. You can also change this and other hotkeys from the Cloud Desktop Management application.
- Delete remembered networks**  
 Click **Manage configured networks** to display a dialog box containing remembered wireless networks. You can delete any network entries from this list.
- Reset wireless interface**  
 If the ZERO+ Client is experiencing wireless network issues, you can click this link to reset the wireless network adapter without rebooting the ZERO+ Client.

## Connecting to a Desktop

### The First-Time Wizard

Cloud Desktop OS displays the First-Time Wizard the first time you power on a client or after a factory reset. This wizard lets administrators create connections quickly by specifying a minimum number of Connection attributes. After creating a Connection, administrators can edit and create additional Connections using the OS's Configuration application.

The section below shows each step in the First-Time Wizard.

### First Connection and Password

This section assumes you are powering on a client for the first time. The table below shows how to create a simple Connection and specify the administrator password.

Step	Action
1	Power on the ZERO+ Client. <b>Result:</b> The ZERO+ Client displays the BIOS splash screen then boots to the desktop. The First-Time Wizard starts and displays the <b>Step 1 - Location and keyboard</b> screen.
2	From the drop-down menus, select values for the <b>Time zone, Country, System locale,</b> and <b>Keyboard layout</b> fields.
3	Click <b>Next</b> . <b>Result:</b> The First-Time Wizard displays the <b>Step 2 - Create a connection</b> screen.
4	Click <b>Mode</b> to display a list of connection modes. Select the mode or protocol for the connection you are creating.
5	In the <b>Target</b> field, type the host name, URL, or IP address of the connection host or connection broker for the ZERO+ Client. For example, if you are using VMware Horizon View, specify the connection server or security server.
6	Optionally, specify a group name in the <b>Resource</b> field if the host target is part of a resource group.
7	Optionally, select the <b>Automatic start</b> option to start the connection when the ZERO+ Client is powered on.
8	Click <b>Next</b> . <b>Result:</b> The First-Time Wizard displays the <b>Step 3 - Set administrator password</b> screen.

*Continued on next page*

## ZERO+ Client Setup, Continued

### First Connection and Password (continued)

Step	Action
9	Specify an administrator password. This is the password that administrators use to access the OS's Configuration application.
10	<p>Click <b>Finish</b>.</p> <p><b>Result:</b> The First-Time Wizard displays a success message and places a connection shortcut on the desktop. Click the <b>Close</b> button in the upper-right portion of the screen to close the First-Time Wizard. (Desktop Connection icons are enabled by default. You can change this setting from the Configuration application.)</p>

**Next step:** The Connection is placed on the desktop and is available from the Start menu (see [Figure 4](#)). See the section below for information about starting a Connection. For more information about configuration options, see *Cloud Desktop OS Quick Start Guide*.

### Starting a Connection

After creating a connection as shown above, users can start connections from the Start menu or from a desktop icon (if desktop icons are enabled in the Configuration application). The picture below shows a Connection desktop shortcut and a Connection listed in the Session menu.

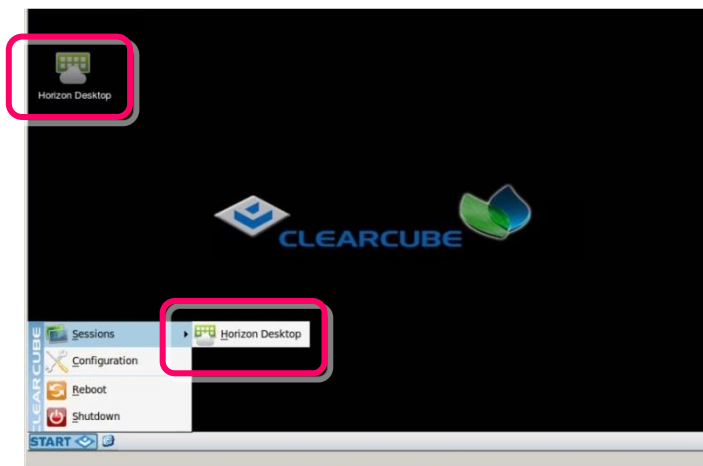


Figure 4. Connection (Sessions) shortcuts

The list below shows how to start a connection.

- Click **Start > Sessions**, and then select a **Connection**. (Alternatively, you can right-click an empty space on the desktop to display the Sessions menu.)

—OR—

- Double-click the Connection desktop icon.

Administrators can permit or prohibit Connection icons from appearing on the desktop. Click **Start > Configuration** and enter the administrator password. From the menu's **Management** area, click **Connections > edit**. Select an option from the **Icon on desktop** field.

## Resources and Support

---

### Additional Information

*Cloud Desktop Quick Start Guide* details Cloud Desktop OS setup, configuration, and more. From the ClearCube Support site ([www.clearcube.com/support/](http://www.clearcube.com/support/)), click the Software drop-down menu, and then click **Cloud Desktop OS**.

---

### Contacting Support

**Web site:** [www.clearcube.com/support](http://www.clearcube.com/support)

**Email:** [support@clearcube.com](mailto:support@clearcube.com)

**Phone:** (512) 652-3400

**Toll-free:** (866) 652-3400

---

G0200188, Rev A

### WEEE Disposal Guidelines

In the European Union, this electronic product falls under the European Directive (2002/96/EC) WEEE. When it reaches the end of its useful life or is no longer wanted, dispose of it at an approved, designated recycling or treatment facility. Check with your local authorities for proper disposal instructions. For assistance, contact ClearCube at [recycle@clearcube.com](mailto:recycle@clearcube.com).

