

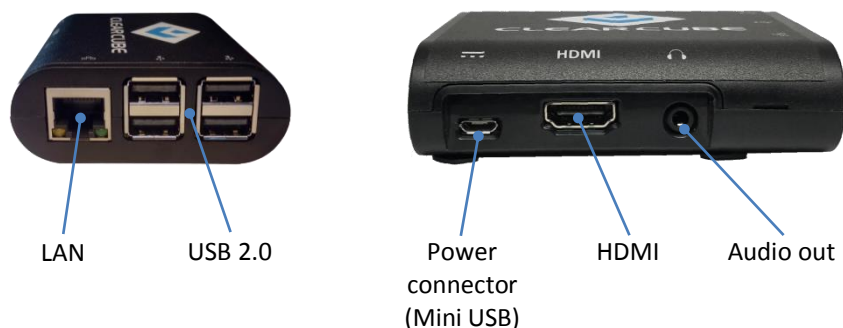
## Overview

### Package Contents

- ClearCube C3Pi Thin Client
- Power adapter
- Mini USB power cable with integrated power switch
- This *Quick Start Guide*

### C3Pi Features

The pictures below show the features of the C3Pi Thin Client.

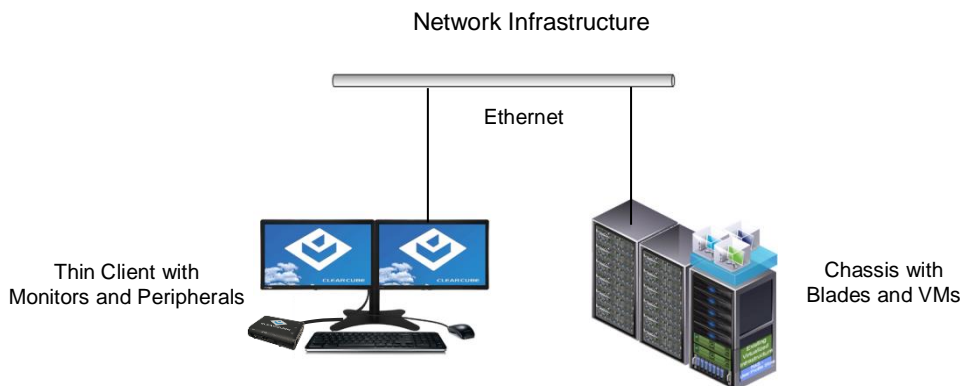


**Figure 1. The C3Pi features and components**

### Thin Client Overview

A *thin client* is a remote computing device that connects a user's monitors, keyboard, mouse, speakers, and other peripherals to remote computers and to virtual desktops (VMs). As shown below, computing resources are typically located in remote data centers.

Thin clients use a remote connection protocol to enable users to work on a blade or VM as if it is a local PC. See the documentation for the remote protocol application that you use for additional information.



**Figure 2. Overview of thin client architecture**

## Thin Client Setup

### Network Requirements

The list below shows inbound ports to open for thin client communication and management.

TCP/UDP	Port	Application
TCP	22	SSH, secure thin client communication (if enabled)
TCP	23	Thin client communication (if enabled)
TCP/UDP	80	HTTP, thin client management access (if enabled)
TCP	443	HTTPS, secure thin client management access (if enabled)

### Setting up a Thin Client

The steps below show how to set up a C3Pi thin client.

Step	Action
1	Carefully unpack the thin client and components. Ensure that you have the following items: <ul style="list-style-type: none"> <li>• Mini USB power cable and 5V, 2.5A power adapter (included)</li> <li>• USB mouse</li> <li>• USB keyboard</li> <li>• HDMI cable and monitor</li> </ul>
2	Connect a USB keyboard, mouse, and any additional peripherals to the C3Pi thin client.
3	Prepare a network connection in one of the following ways: <ul style="list-style-type: none"> <li>• If you are using a wired network connection, connect an Ethernet cable to the Ethernet port on the rear of the thin client and to the Ethernet port on the remote compute device or network device (such as a network switch).</li> </ul> <p>—OR—</p> <ul style="list-style-type: none"> <li>• If you are using wireless (Wi-Fi) connections, see “<a href="#">Connecting to Wireless Networks</a>” below to configure wireless connections after using the First-Time Wizard.</li> </ul>

*Continued on next page*

## Thin Client Setup, Continued

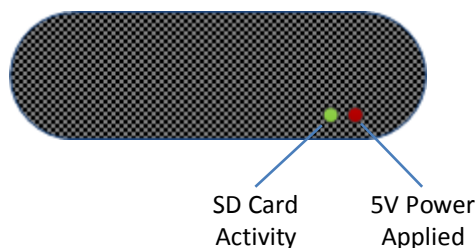
### Setting up a Thin Client (continued)

Step	Action
4	Connect the included Mini USB power cord and AC adapter, and then plug the Mini USB cable into the rear of the thin client. Continue by plugging the power adapter into an AC power outlet.
5	Power on the thin client by pressing the inline power button on the power cable.

**Next steps:** Perform the initial configuration of Cloud Desktop OS (First-Time Wizard) and, optionally, configure Wi-Fi connections.

### C3Pi Indicators and Power Controls

The picture below shows the indicators on the side of the C3Pi.



**Figure 3. Indicators on the side of the C3Pi**

The list below describes power functions available from the power cable and operating system.

- **Power cable with inline switch**

The power cable provides 5V power to the C3Pi, and the switch integrated into the cable turns 5V power on and off.

- **Cloud Desktop OS:**

- **Shutdown:** From Cloud Desktop OS, click **Start > Shutdown**.

When using Cloud Desktop Shutdown option, the C3Pi enters a low power state—note that the red, 5V power light remains on after shutting down. While the C3Pi is in a low power state, 5V power is still present. To turn off 5V power, press the inline power button on the power cable, and the light will turn off.

**NOTE:** To apply power to the C3Pi from this state, you might have to press the inline power button twice.

- **Reboot:** From Cloud Desktop OS, click **Start > Reboot** to shut down and restart the operating system.

## Cloud Desktop OS Setup (First-Time Wizard)

### About Cloud Desktop OS

Cloud Desktop OS is the operating system included with ClearCube C3Pi thin clients. See the *Cloud Desktop Quick Start Guide*, included in your shipment, for details about setting up and configuring Cloud Desktop OS. The quick start guide is also available from the ClearCube Support site ([www.clearcube.com/support/](http://www.clearcube.com/support/)). From the Software drop-down menu, click **Cloud Desktop OS**.

### Cloud Desktop OS Accounts

The C3Pi Thin Client boots to the user account and displays the configuration wizard the first time you power on the thin client. The default password is **admin** (case-sensitive).

**NOTE:** Change administrator password immediately after logging in. You can specify a new password using the configuration wizard (First-Time Wizard).

### The First-Time Wizard

Cloud Desktop OS displays the First-Time Wizard the first time you power on a client or after a factory reset. This wizard lets administrators create connections quickly by specifying a minimum number of Connection attributes. After creating a Connection, administrators can edit and create additional Connections using the OS's Configuration application.

The section below shows each step in the First-Time Wizard.

### First Connection

This section assumes you are powering on a client for the first time. The table below shows how to create a simple Connection and specify the administrator password.

Step	Action
1	Power on the thin client. <b>Result:</b> The thin client displays the BIOS splash screen then boots to the desktop. The First-Time Wizard starts and displays the <b>Step 1 - Location and keyboard</b> screen.
2	From the drop-down menus, select values for the <b>Time zone</b> , <b>Country</b> , <b>System locale</b> , and <b>Keyboard layout</b> fields.
3	Click <b>Next</b> . <b>Result:</b> The First-Time Wizard displays the <b>Step 2 - Create a connection</b> screen.
4	Click <b>Mode</b> to display a list of connection modes. Select the mode or protocol for the connection you are creating.
5	In the <b>Target</b> field, type the host name, URL, or IP address of the connection host or connection broker for the thin client. For example, if you are using VMware Horizon View, specify the connection server or security server.
6	Optionally, specify a group name in the <b>Resource</b> field if the host target is part of a resource group.

*Continued on next page*

## Cloud Desktop OS Setup (First-Time Wizard), Continued

### First Connection (continued)

---

Step	Action
7	Optionally, select the <b>Automatic start</b> option to start the connection when the thin client is powered on.
8	Click <b>Next</b> . <b>Result:</b> The First-Time Wizard displays the <b>Step 3 - Set administrator password</b> screen.
9	Specify an administrator password. This is the password that administrators use to access the OS's Configuration application.
10	Click <b>Finish</b> . <b>Result:</b> The First-Time Wizard displays a success message and places a connection shortcut on the desktop. Click the <b>Close</b> button in the upper-right portion of the screen to close the First-Time Wizard. (Desktop Connection icons are enabled by default. You can change this setting from the Configuration application.)

**Next step:** The Connection is placed on the desktop and is available from the Start menu (see [Figure 5](#)). See the section below for information about starting a Connection. For more information about configuration options, see *Cloud Desktop OS Quick Start Guide*.

---

## Wireless Network Setup

### Connecting to Wireless Networks

Your C3Pi Thin Client includes an internal wireless radio (Wi-Fi) for wireless network connections. The table below shows how to connect to wireless networks (instructions assume that wireless network infrastructure is in place).

Step	Action
1	From Cloud Desktop OS, press <b>CTRL+ALT+w</b> on your keyboard. <b>Result:</b> a dialog box appears listing available wireless networks.
2	Click a wireless network listed in the Visible Wi-Fi networks area. <b>Result:</b> if a password is required, a dialog box appears. Otherwise, the thin client joins the wireless network
3	If a password is requested, enter the wireless network password in the <b>Password</b> text box (optionally, select <b>Remember this network</b> to log in automatically). Click <b>Join</b> to join the wireless network.

The picture and list below detail wireless options available from the list of visible networks.

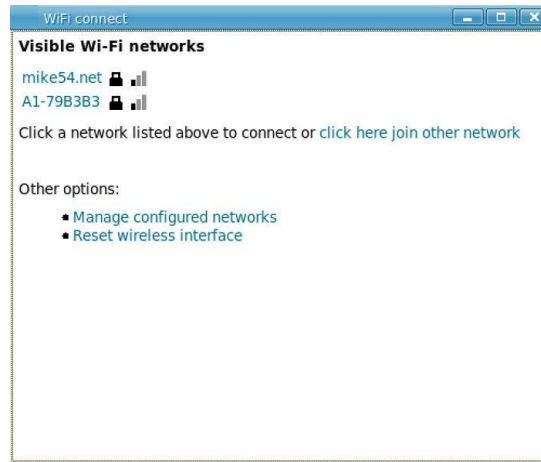


Figure 4. Visible Wi-Fi networks list and options

- Connect to a hidden network**  
 Administrators can prevent networks from appearing in the list of networks displayed after pressing the network hotkey (**CTRL+ALT+w**). To connect to a network that is not displayed, click the **click here to join other network** link. Click the network to connect to, then type the network name (SSID) and password. (From the management menus, you can change or disable this hotkey.)

*Continued on next page*

## Wireless Network Setup, Continued

### Connecting to Wireless Networks (continued)

To disable this hotkey from Cloud Desktop OS, click **Input > Keyboard > Hotkeys**. Clear all values from the **Show and connect to available Wi-Fi networks** field, making sure that the field is empty. You can also change this and other hotkeys from the Cloud Desktop Management application.

- **Delete remembered networks**  
Click **Manage configured networks** to display a dialog box containing remembered wireless networks. You can delete any network entries from this list.
- **Reset wireless interface**  
If the thin client is experiencing wireless network issues, you can click this link to reset the wireless network adapter without restarting the thin client.

### Starting a Connection

After creating a connection as shown above, users can start Connections from the Start menu or from a desktop icon (if desktop icons are enabled in the Configuration application). The picture below shows a Connection desktop shortcut and a Connection listed in the Session menu.

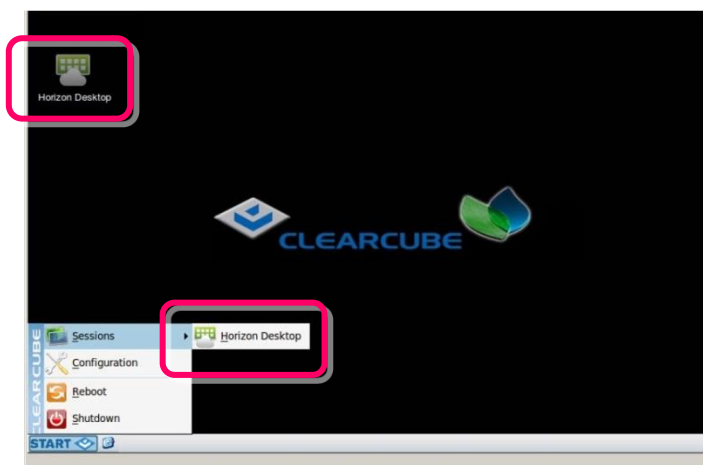


Figure 5. Connection (Sessions) shortcuts

The list below shows how to start a connection.

- Click **Start > Sessions**, and then select a **Connection**. (Alternatively, you can right-click an empty space on the desktop to display the Sessions menu.)

—OR—

*Continued on next page*

## Wireless Network Setup, Continued

---

### Starting a Connection (continued)

- Double-click the Connection desktop icon.

Administrators can permit or prohibit Connection icons from appearing on the desktop. Click **Start > Configuration** and enter the administrator password. From the menu's **Management** area, click **Connections > edit**. Select an option from the **Icon on desktop** field.

---

## Resources and Support

---

### Additional Information

*Cloud Desktop Quick Start Guide* details Cloud Desktop OS setup, configuration, and more. From the ClearCube Support site ([www.clearcube.com/support/](http://www.clearcube.com/support/)), click the Software drop-down menu, and then click **Cloud Desktop OS**.

---

### Contacting Support

**Web site:** [www.clearcube.com/support](http://www.clearcube.com/support)

**Email:** [support@clearcube.com](mailto:support@clearcube.com)

**Phone:** (512) 652-3400

**Toll-free:** (866) 652-3400

---

G0200190, Rev A

### WEEE Disposal Guidelines

In the European Union, this electronic product falls under the European Directive (2002/96/EC) WEEE. When it reaches the end of its useful life or is no longer wanted, dispose of it at an approved, designated recycling or treatment facility. Check with your local authorities for proper disposal instructions. For assistance, contact ClearCube at [recycle@clearcube.com](mailto:recycle@clearcube.com).

