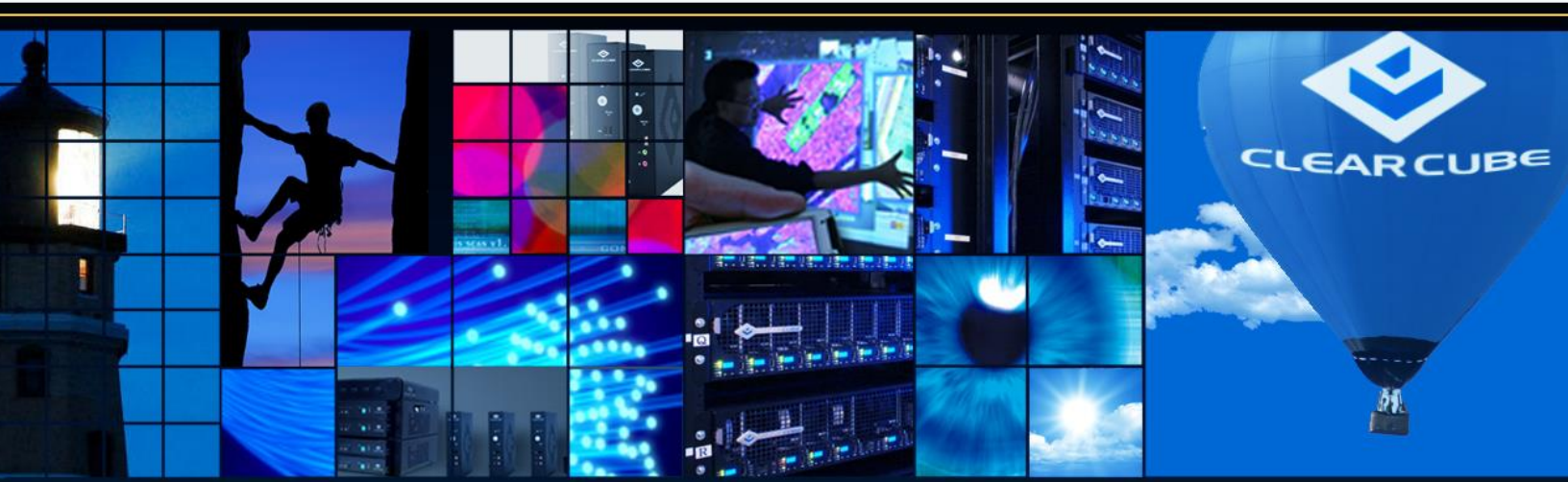


# Section 508 Conformance Audit

Voluntary Product Accessibility Template®

ClearCube® Thin Clients



**CLEARCUBE®**

## Section 508 Evaluation Template

This Voluntary Product Accessibility Template (VPAT) provides guidance on the accessibility characteristics of **ClearCube Thin Clients and ZERO+ Clients** .

**Date:** 05/07/2019

**Product Name:** ClearCube Thin Clients and ZERO+ Clients

**Product Version Number:** C3Pi, C3Pi+, C3xPi, CD8801, CD8811, CD8815, CD8826, CD8831, CD8841, CD8851, CD5012 ZERO+, CD5014 ZERO+, CD7012 ZERO+, CD7014 ZERO+

**Items Covered:** ClearCube Thin Clients and ZERO+ Clients hardware

**Vendor Company Name:** ClearCube Technology

**Vendor Contact Name:** Crosby Marks

**Vendor Contact Telephone:** 512-652-3246

The current version was tested for conformance with Section 508 of the Rehabilitation Act, specifically, the U.S. Access Board's Technical Requirements.

<b>VPAT™ Summary Table Voluntary Product Accessibility Template®</b>				
<b>VPAT Summary</b>	<b>Total Standards</b>	<b>Total Applicable Standards</b>	<b>Supports</b>	<b>Exceptions</b>
Section 1194.21 Software Applications and Operating Systems	12	9	9	0
Section 1194.22 Web-based Internet/Intranet Information and Applications	16	0	0	0
Section 1194.23 Telecommunications Products	14	4	4	0
Section 1194.24 Video and Multi-media Products	5	0	0	0
Section 1194.25 Self-Contained, Closed Products	13	0	0	0
Section 1194.26 Desktop and Portable Computers	4	2	2	0
Section 1194.31 Functional Performance Criteria	6	5	3	2
Section 1194.41 Information, Documentation and Support	3	3	3	0
<b>TOTAL</b>	<b>73</b>	<b>23</b>	<b>21</b>	<b>2</b>

<b>Section 1194.21 Software Applications and Operating Systems - Detail</b> <b>VPAT™</b> <b>Voluntary Product Accessibility Template®</b>		
Criteria	Supporting Features	Remarks and Explanations
(a) When software is designed to run on a system that has a keyboard, product functions shall be executable from a keyboard where the function itself or the result of performing a function can be discerned textually.	Supports	Device provides confirmation messages for functional commands that are entered into the utility. This enables users to access all features and functions using a keyboard or other input device.
(b) Applications shall not disrupt or disable activated features of other products that are identified as accessibility features, where those features are developed and documented according to industry standards. Applications also shall not disrupt or disable activated features of any operating system that are identified as accessibility features where the application programming interface for those accessibility features has been documented by the manufacturer of the operating system and is available to the product developer.	Supports	Device does not alter the features and functions used for disabled persons. It does not adversely affect any of the device's accessibility features.
(c) A well-defined on-screen indication of the current focus shall be provided that moves among interactive interface elements as the input focus changes. The focus shall be programmatically exposed so that Assistive Technology can Supports track focus and focus changes.	Supports	Uses all text elements to indicate a selected item.
(d) Sufficient information about a user interface element including the identity, operation and state of the element shall be available to Assistive Technology. When an image represents a program element, the information conveyed by the image must also be available in text.	Supports	All interface elements are textual or graphical.

<p>(e) When bitmap images are used to identify controls, status indicators, or other programmatic elements, the meaning assigned to those images shall be consistent throughout an application's performance.</p>	<p>Supports</p>	<p>Graphic interface elements are consistent.</p>
<p>(f) Textual information shall be provided through operating system functions for displaying text. The minimum information that shall be made available is text content, text input caret location, and text attributes.</p>	<p>Supports</p>	<p>All textual information is provided through OS functions for displaying text.</p>
<p>(g) Applications shall not override user selected contrast and color selections and other individual display attributes.</p>	<p>Supports</p>	<p>This device runs operating systems, supports operating system accessibility features, and applications developed according to operating system and industry standards.</p>
<p>(h) When animation is displayed, the information shall be displayable in at least one non-animated presentation mode at the option of the user.</p>	<p>Not Applicable</p>	<p>This device runs operating systems, supports operating system accessibility features, and applications developed according to operating system and industry standards. Device does not alter the features and functions used for disabled persons. It does not adversely affect any of the device's accessibility features.</p>
<p>(i) Color coding shall not be used as the only means of conveying information, indicating an action, prompting a response, or distinguishing a visual element.</p>	<p>Supports</p>	<p>Screen labels are provided for all functions.</p>
<p>(j) When a product permits a user to adjust color and contrast settings, a variety of color selections capable of producing a range of contrast levels shall be provided.</p>	<p>Not Applicable</p>	<p>This device runs operating systems, supports operating system accessibility features, and applications developed according to operating system and industry standards. Device does not alter the features and functions used for disabled persons. It does not adversely affect any of the device's accessibility features.</p>
<p>(k) Software shall not use flashing or blinking text, objects, or other elements having a flash or blink frequency greater than 2 Hz and lower than 55 Hz.</p>	<p>Not Applicable</p>	<p>This device runs operating systems, supports operating system accessibility features, and applications developed according to operating system and industry standards. Device does not alter the features and functions used for disabled persons. It does not adversely affect any of the device's accessibility features.</p>
<p>(l) When electronic forms are used, the</p>	<p>Supports</p>	<p>All inputs from devices connected to the USB</p>

<p>form shall allow people using Assistive Technology to access the information, field elements, and functionality required for completion and submission of the form, including all directions and cues.</p>		<p>are received and processed accordingly.</p>
---	--	--

<b>Section 1194.22 Web-based Internet/Intranet information and applications - Detail</b>		
<b>VPAT™</b>		
<b>Voluntary Product Accessibility Template®</b>		
<b>Criteria</b>	<b>Supporting Features</b>	<b>Remarks and Explanations</b>
(a) A text equivalent for every non-text element shall be provided (e.g., via "alt", "longdesc", or in element content).	Not Applicable	This product is not an Internet-based application.
(b) Equivalent alternatives for any multimedia presentation shall be synchronized with the presentation.	Not Applicable	This product is not an Internet-based application.
(c) Web pages shall be designed so that all information conveyed with color is also available without color, for example from context or markup.	Not Applicable	This product is not an Internet-based application.
(d) Documents shall be organized so they are readable without requiring an associated style sheet.	Not Applicable	This product is not an Internet-based application.
(e) Redundant text links shall be provided for each active region of a server-side image map.	Not Applicable	This product is not an Internet-based application.
(f) Client-side image maps shall be provided instead of server-side image maps except where the regions cannot be defined with an available geometric shape.	Not Applicable	This product is not an Internet-based application.
(g) Row and column headers shall be identified for data tables.	Not Applicable	This product is not an Internet-based application.
(h) Markup shall be used to associate data cells and header cells for data tables that have two or more logical levels of row or column headers.	Not Applicable	This product is not an Internet-based application.
(i) Frames shall be titled with text that facilitates frame identification and navigation	Not Applicable	This product is not an Internet-based application.
(j) Pages shall be designed to avoid causing the screen to flicker with a frequency greater than 2 Hz and lower	Not Applicable	This product is not an Internet-based application.

than 55 Hz.		
(k) A text-only page, with equivalent information or functionality, shall be provided to make a web site comply with the provisions of this part, when compliance cannot be accomplished in any other way. The content of the text-only page shall be updated whenever the primary page changes.	Not Applicable	This product is not an Internet-based application.
(l) When pages utilize scripting languages to display content, or to create interface elements, the information provided by the script shall be identified with functional text that can be read by Assistive Technology.	Not Applicable	This product is not an Internet-based application.
( m) When a web page requires that an applet, plug-in or other application be present on the client system to interpret page content, the page must provide a link to a plug-in or applet that complies with §1194.21(a) through (l).	Not Applicable	This product is not an Internet-based application.
(n) When electronic forms are designed to be completed on-line, the form shall allow people using Assistive Technology to access the information, field elements, and functionality required for completion and submission of the form, including all directions and cues.	Not Applicable	This product is not an Internet-based application.
(o) A method shall be provided that permits users to skip repetitive navigation links.	Not Applicable	This product is not an Internet-based application.
(p) When a timed response is required, the user shall be alerted and given sufficient time to indicate more time is required.	Not Applicable	This product is not an Internet-based application.

<b>Section 1194.23 Telecommunications Products - Detail</b> <b>VPAT™</b> <b>Voluntary Product Accessibility Template®</b>		
Criteria	Supporting Features	Remarks and Explanations
(a) Telecommunications products or systems which provide a function allowing voice communication and which do not themselves provide a TTY functionality shall provide a standard non-acoustic connection point for TTYs. Microphones shall be capable of being turned on and off to allow the user to intermix speech with TTY use.	Not Applicable	This product is not a Telecommunications Product or System.
(b) Telecommunications products which include voice communication functionality shall support all commonly used cross-manufacturer non-proprietary standard TTY signal protocols.	Not Applicable	This product is not a Telecommunications Product or System.
(c) Voice mail, auto-attendant, and interactive voice response telecommunications systems shall be usable by TTY users with their TTYs.	Not Applicable	This product is not a Telecommunications Product or System.
(d) Voice mail, messaging, auto-attendant, and interactive voice response telecommunications systems that require a response from a user within a time interval, shall give an alert when the time interval is about to run out, and shall provide sufficient time for the user to indicate more time is required.	Not Applicable	This product is not a Telecommunications Product or System.
(e) Where provided, caller identification and similar telecommunications functions shall also be available for users of TTYs, and for users who cannot see displays.	Not Applicable	This product is not a Telecommunications Product or System.
(f) For transmitted voice signals, telecommunications products shall	Not Applicable	This product is not a Telecommunications Product or System.



provide a gain adjustable up to a minimum of 20 dB. For incremental volume control, at least one intermediate step of 12 dB of gain shall be provided.		
(g) If the telecommunications product allows a user to adjust the receive volume, a function shall be provided to automatically reset the volume to the default level after every use.	Not Applicable	This product is not a Telecommunications Product or System.
(h) Where a telecommunications product delivers output by an audio transducer which is normally held up to the ear, a means for effective magnetic wireless coupling to hearing technologies shall be provided.	Not Applicable	This product is not a Telecommunications Product or System.
(i) Interference to hearing technologies (including hearing aids, cochlear implants, and assistive listening devices) shall be reduced to the lowest possible level that allows a user of hearing technologies to utilize the telecommunications product.	Not Applicable	This product is not a Telecommunications Product or System.
(j) Products that transmit or conduct information or communication, shall pass through cross-manufacturer, non-proprietary, industry-standard codes, translation protocols, formats or other information necessary to provide the information or communication in a usable format. Technologies which use encoding, signal compression, format transformation, or similar techniques shall not remove information needed for access or shall restore it upon delivery.	Not Applicable	This product is not a Telecommunications Product or System.
(k)(1) Products which have mechanically operated controls or keys shall comply with the following: Controls and Keys shall be tactilely discernible without activating the controls or keys.	Supports	While this product is not a Telecommunications Product or System, it does comply with 1194.26.  Controls and keys are tactilely discernible without activating the controls or keys.
(k)(2) Products which have mechanically operated controls or keys	Supports	While this product is not a Telecommunications Product or System, it does comply with 1194.26.

<p>shall comply with the following: Controls and Keys shall be operable with one hand and shall not require tight grasping, pinching, twisting of the wrist. The force required to activate controls and keys shall be 5 lbs. (22.2N) maximum.</p>		<p>Controls are operable with one hand without incorporating significant strength, dexterity, or wrist movement. Activation force is less than 5 lbs.</p>
<p>(k)(3) Products which have mechanically operated controls or keys shall comply with the following: If key repeat is supported, the delay before repeat shall be adjustable to at least 2 seconds. Key repeat rate shall be adjustable to 2 seconds per character.</p>	<p>Supports</p>	<p>While this product is not a Telecommunications Product or System, it does comply with 1194.26.  Key repeat delay and repeat rate are configurable.</p>
<p>(k)(4) Products which have mechanically operated controls or keys shall comply with the following: The status of all locking or toggle controls or keys shall be visually discernible, and discernible either through touch or sound.</p>	<p>Supports</p>	<p>While this product is not a Telecommunications Product or System, it does comply with 1194.26.</p>

<b>Section 1194.24 Video and Multi-media Products – Detail</b> <b>VPAT™</b> <b>Voluntary Product Accessibility Template®</b>		
Criteria	Supporting Features	Remarks and Explanations
<p>a) All analog television displays 13 inches and larger, and computer equipment that includes analog television receiver or display circuitry, shall be equipped with caption decoder circuitry which appropriately receives, decodes, and displays closed captions from broadcast, cable, videotape, and DVD signals. As soon as practicable, but not later than July 1, 2002, widescreen digital television (DTV) displays measuring at least 7.8 inches vertically, DTV sets with conventional displays measuring at least 13 inches vertically, and stand-alone DTV tuners, whether or not they are marketed with display screens, and computer equipment that includes DTV receiver or display circuitry, shall be equipped with caption decoder circuitry which appropriately receives, decodes, and displays closed captions from broadcast, cable, videotape, and DVD signals.</p>	<p>Not Applicable</p>	<p>This device is not a video or multi-media product.</p> <p>The device does not contain any analog television receiver or display circuitry.</p>
<p>(b) Television tuners, including tuner cards for use in computers, shall be equipped with secondary audio program playback circuitry.</p>	<p>Not Applicable</p>	<p>This device is not a video or multi-media product.</p>
<p>(c) All training and informational video and multimedia productions which support the agency's mission, regardless of format, that contain speech or other audio information necessary for the comprehension of the content, shall be open or closed captioned.</p>	<p>Not Applicable</p>	<p>The device does not contain any analog television receiver or display circuitry.</p>

<p>(d) All training and informational video and multimedia productions which support the agency's mission, regardless of format, that contain visual information necessary for the comprehension of the content, shall be audio described.</p>	<p>Not Applicable</p>	<p>This device is not a video or multi-media product.</p>
<p>(e) Display or presentation of alternate text presentation or audio descriptions shall be user-selectable unless permanent.</p>	<p>Not Applicable</p>	<p>The device does not contain any analog television receiver or display circuitry.</p>

<b>Section 1194.25 Self-Contained, Closed Products – Detail</b> <b>VPAT™</b> <b>Voluntary Product Accessibility Template®</b>		
Criteria	Supporting Features	Remarks and Explanations
(a) Self-contained products shall be usable by people with disabilities without requiring an end-user to attach Assistive Technology to the product. Personal headsets for private listening are not Assistive Technology.	Not Applicable	This device is not a self-contained, closed product.
(b) When a timed response is required, the user shall be alerted and given sufficient time to indicate more time is required.	Not Applicable	This device is not a self-contained, closed product.
(c) Where a product utilizes touchscreens or contact-sensitive controls, an input method shall be provided that complies with §1194.23 (k) (1) through (4).	Not Applicable	The product does not have a touchscreen component.
(d) When biometric forms of user identification or control are used, an alternative form of identification or activation, which does not require the user to possess particular biological characteristics, shall also be provided.	Not Applicable	The product does not have a biometric form of user identification or control.
(e) When products provide auditory output, the audio signal shall be provided at a standard signal level through an industry standard connector that will allow for private listening. The product must provide the ability to interrupt, pause, and restart the audio at any time.	Not Applicable	This device is not a self-contained, closed product.
(f) When products deliver voice output in a public area, incremental volume control shall be provided with output amplification up to a level of at least 65 dB. Where the ambient noise level of the environment is above 45 dB, a	Not Applicable	This device is not a self-contained, closed product.

<p>volume gain of at least 20 dB above the ambient level shall be user selectable. A function shall be provided to automatically reset the volume to the default level after every use.</p>		
<p>(g) Color coding shall not be used as the only means of conveying information, indicating an action, prompting a response, or distinguishing a visual element.</p>	<p>Not Applicable</p>	<p>Color coding is not the primary or only means of conveying information or indicating an action.</p>
<p>(h) When a product permits a user to adjust color and contrast settings, a range of color selections capable of producing a variety of contrast levels shall be provided.</p>	<p>Not Applicable</p>	<p>This device is not a self-contained, closed product.</p>
<p>(i) Products shall be designed to avoid causing the screen to flicker with a frequency greater than 2 Hz and lower than 55 Hz.</p>	<p>Not Applicable</p>	<p>Blinking does not occur between 2hz and 55hz.</p>
<p>(j) (1) Products which are freestanding, non-portable, and intended to be used in one location and which have operable controls shall comply with the following: The position of any operable control shall be determined with respect to a vertical plane, which is 48 inches in length, centered on the operable control, and at the maximum protrusion of the product within the 48 inch length on products which are freestanding, non-portable, and intended to be used in one location and which have operable controls.</p>	<p>Not Applicable</p>	<p>This device can be moved from one location to another.</p>
<p>(j)(2) Products which are freestanding, non-portable, and intended to be used in one location and which have operable controls shall comply with the following: Where any operable control is 10 inches or less behind the reference plane, the height shall be 54 inches maximum and 15 inches minimum above the floor.</p>	<p>Not Applicable</p>	<p>This device can be moved from one location to another.</p>
<p>(j)(3) Products which are freestanding, non-portable, and intended to be used</p>	<p>Not Applicable</p>	<p>This device can be moved from one location to another.</p>

<p>in one location and which have operable controls shall comply with the following: Where any operable control is more than 10 inches and not more than 24 inches behind the reference plane, the height shall be 46 inches maximum and 15 inches minimum above the floor.</p>		
<p>(j)(4) Products which are freestanding, non-portable, and intended to be used in one location and which have operable controls shall comply with the following: Operable controls shall not be more than 24 inches behind the reference plane.</p>	<p>Not Applicable</p>	<p>This device can be moved from one location to another.</p>

<b>Section 1194.26 Desktop and Portable Computers</b> <b>VPAT™</b> <b>Voluntary Product Accessibility Template®</b>		
Criteria	Supporting Features	Remarks and Explanations
(a) All mechanically operated controls and keys shall comply with §1194.23 (k) (1) through (4).	Supports	Product has tactile control buttons.  Controls and keys comply with 1194.23 (k) (1) through (4).
(b) If a product utilizes touchscreens or touch-operated controls, an input method shall be provided that complies with §1194.23 (k) (1) through (4).	Not Applicable	This device has tactile control buttons.
(c) When biometric forms of user identification or control are used, an alternative form of identification or activation, which does not require the user to possess particular biological characteristics, shall also be provided.	Not Applicable	Some product models support insertion of common access card (CAC) or PIV card authentication.
(d) Where provided, at least one of each type of expansion slots, ports and connectors shall comply with publicly available industry standards	Supports	CAC, PIV cards and SIPR tokens comply to government regulations.  All other ports industry standard (e.g. Ethernet port, USB port, standard audio input and output jacks).



<p align="center"><b>Section 1194.31 Functional Performance Criteria – Detail</b>  <b>VPAT™</b>  <b>Voluntary Product Accessibility Template®</b></p>		
Criteria	Supporting Features	Remarks and Explanations
(a) At least one mode of operation and information retrieval that does not require user vision shall be provided, or support for Assistive Technology used by people who are blind or visually impaired shall be provided.	Not Applicable	Device does not include modes of operation that do not require vision.
(b) At least one mode of operation and information retrieval that does not require visual acuity greater than 20/70 shall be provided in audio and enlarged print output working together or independently, or support for Assistive Technology used by people who are visually impaired shall be provided.	Supports with Exceptions	<p><b>Windows OS clients:</b> Supported through OS accessibility features.</p> <p><b>CDOS-based clients:</b> Does not support from CDOS for administrators. For remote host users, supported through OS accessibility features (OS-dependent).</p>
(c) At least one mode of operation and information retrieval that does not require user hearing shall be provided, or support for Assistive Technology used by people who are deaf or hard of hearing shall be provided	Supports	Devices does not require user hearing to operate or for information retrieval.
(d) Where audio information is important for the use of a product, at least one mode of operation and information retrieval shall be provided in an enhanced auditory fashion, or support for assistive hearing devices shall be provided.	Supports with Exceptions	<p><b>Windows OS clients:</b> Supported through OS accessibility features.</p> <p><b>CDOS-based clients:</b> Does not support from CDOS for administrators. For remote host users, supported through OS accessibility features (OS-dependent).</p>
(e) At least one mode of operation and information retrieval that does not require user speech shall be	Supports	Device does not require user speech to operate or retrieve information.

provided, or support for Assistive Technology used by people with disabilities shall be provided.		
(f) At least one mode of operation and information retrieval that does not require fine motor control or simultaneous actions and that is operable with limited reach and strength shall be provided.	Supports	Device operation and information retrieval does not require fine motor control and simultaneous actions. Users can operate the product with limited reach and strength. Reference 1194.26(a) and 1194.26(b) for details.

<p align="center"><b>Section 1194.41 Information, Documentation and Support – Detail</b>  <b>VPAT™</b>  <b>Voluntary Product Accessibility Template®</b></p>		
Criteria	Supporting Features	Remarks and Explanations
(a) Product support documentation provided to end-users shall be made available in alternate formats upon request, at no additional charge	Supports	<p>Product documentation is available in electronic form from the web in a manner that can be access through various Assistive Technologies.</p> <p>Access to product support documentation in alternative formats is available by contacting ClearCube Support at no additional charge to the end user.</p>
(b) End-users shall have access to a description of the accessibility and compatibility features of products in alternate formats or alternate methods upon request, at no additional charge.	Supports	<p>Description of accessible features is available in electronic form and at no additional charge to the end user.</p>
(c) Support services for products shall accommodate the communication needs of end-users with disabilities.	Supports	<p>ClearCube Support provides s technical support via telephone, email, video conferencing, and online chat format.</p>

## **APPENDIX A (of the DoS GPAT Checklist)**

### **Suggested Language for Filling out the GPAT**

In order to simplify the task of conducting market research assessments for procurement officials or customers, ITIC (Information Technology Industry Council) has developed suggested language for use when filling out a V PAT/G PAT. You may choose to employ all or some of the language below. Once you determine what language you intend to use, we recommend that use is consistent throughout all of your GPATs.

### **Supporting Features (Column 2 on G PAT)**

#### **Supports**

Use this language when you determine the product fully meets the letter and intent of the Criteria.

#### **Supports with Exceptions**

Use this language when you determine the product does not fully meet the letter and intent of the Criteria, but provides some level of access relative to the Criteria.

#### **Supports through Equivalent Facilitation**

Use this language when you have identified an alternate way to meet the intent of the Criteria or when the product does not fully meet the intent of the Criteria.

#### **Supports when combined with Compatible AT**

Use this language when you determine the product fully meets the letter and intent of the Criteria when used in combination with Compatible AT. For example, many software programs can provide speech output when combined with a compatible screen reader (commonly used assistive technology for people who are blind).

#### **Does not Support**

Use this language when you determine the product does not meet the letter or intent of the Criteria.

#### **Not Applicable**

Use this language when you determine that the Criteria do not apply to the specific product.

#### **Not Applicable - Fundamental Alteration Exception Applies**

Use this language when you determine a Fundamental Alteration of the product would be required to meet the Criteria (see the access board standards for the definition of "fundamental alteration").

#### **IMPACT Outreach Center**

IRM Program for Accessible Computer/Communication Technology (IMPACT)

(IRM/BPC/BC/SAS)

2121 Virginia Ave, N.W. (SA-3), Suite 4170

Washington, DC 20520

Email: SECTION508@state.gov

Voice: (202) 663-0221

TTY: (202) 663-0084

Internet: <http://www.state.gov/m/irm/impact/index.htm>

Intranet: <http://impact.state.gov>