

Overview

Package Contents

- CD8840 thin client
 - Power adapter and power cable
 - This *Quick Start Guide*
-

Thin Client Features

The pictures below show CD8840 thin client features.

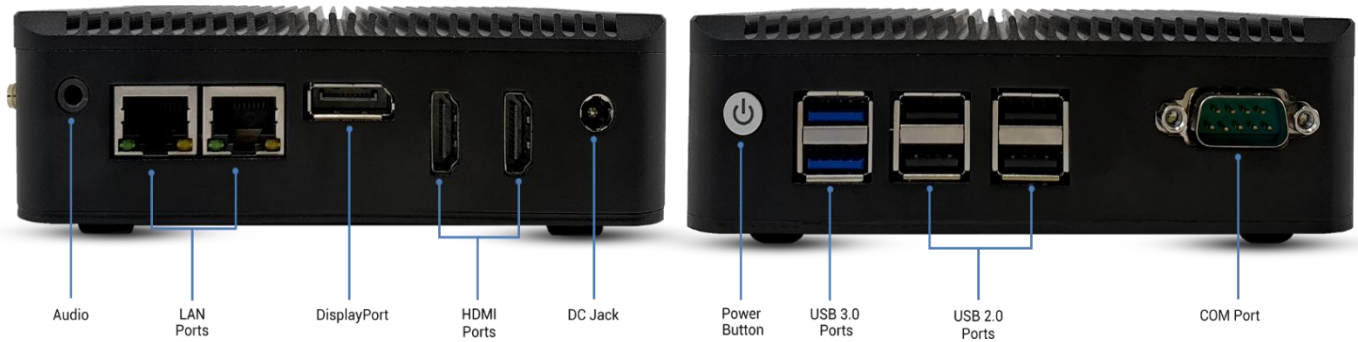


Figure 1. The CD8840 Features and Components

Overview, Continued

Thin Client Architecture Overview

A thin client is a remote computing device that connects a user's monitors, keyboard, mouse, speakers, and other peripherals to remote PC blades (computers) and to virtual desktops (VMs). As shown below, computing resources are typically located in remote data centers.

Using a remote connection protocol, thin clients enable users to work on a blade or VM as if it is a local PC. See the documentation for the remote protocol application that you use for additional information.

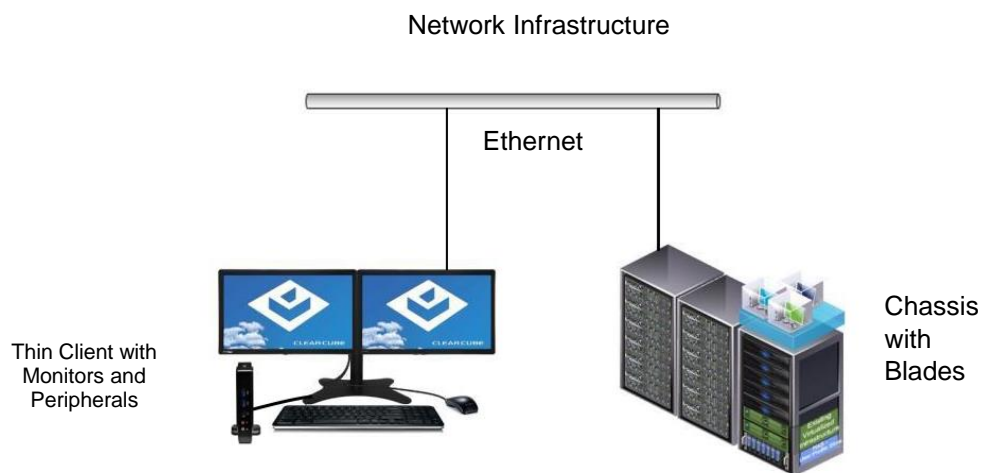


Figure 2. Overview of thin client architecture

Thin Client Setup

Safety and Precautions



- Do not install the thin client in areas where it can become wet or be exposed to water.
 - Only use the power cord shipped with the thin client.
 - Ensure there is four inches of space surrounding the thin client. Inadequate ventilation can damage the device.
-

Setting up a Thin Client

The steps below show how to set up a thin client.

Step	Action
1	Carefully unpack the thin client and components. Ensure that you have the following items: <ul style="list-style-type: none"> • Power cord and adapter (included) • USB mouse • USB keyboard • HDMI monitors, DisplayPort monitor, or both
2	Place the thin client as shown in Figure 1.
3	Connect a USB keyboard and mouse to the thin client.
4	Prepare a network connection in one of the following ways: <ul style="list-style-type: none"> • If you are using a wired network connection, connect an Ethernet cable to the Ethernet port on the rear of the thin client and to the Ethernet port on the remote compute device or network device (such as a network switch). —OR— • If you are using wireless (Wi-Fi) connections, see “Connecting to Wireless Networks” below to configure wireless connections after using the First-Time Wizard.
5	Optionally, connect any peripherals to the thin client.

Thin Client Setup, Continued

Setting up a Thin Client (continued)

Step	Action
6	Connect the included power cord and AC adapter, and then plug the adapter into the rear of the thin client. Continue by plugging the power cord into an AC power outlet.
7	Power on the thin client by pressing the power button on the front of the thin client.

You can now use remote connection software to connect to a remote computing device.

Next steps: Perform the initial configuration of Cloud Desktop OS (First-Time Wizard) and, optionally, configure Wi-Fi connections.

CD8840 Power Controls

The list below describes power functions available from the power cable and operating system.

- **Power cable with switch**

The power cable provides 12V power to the CD8840, and the switch integrated into the cable turns 12V power on and off.

- **Cloud Desktop OS**

- **Shutdown:** From Cloud Desktop OS, click **Start > Shutdown**.

- **Reboot:** From Cloud Desktop OS, click **Start > Reboot** to shut down and restart the operating system.

Cloud Desktop OS (First-Time Wizard)

About Cloud Desktop OS

Cloud Desktop OS is the operating system included with the ClearCube CD8840 thin client. See the Cloud Desktop Quick Start Guide included in your shipment for details about setting up and configuring Cloud Desktop OS. The quick start guide is also available from the ClearCube Support site (www.clearcube.com/support/). From the Software drop-down menu, click **Cloud Desktop OS**.

BIOS Hotkey

To access the BIOS, press the **ESC** key when prompted as the ClearCube splash screen appears.

User Accounts

Depending on configuration, thin clients include a Windows operating system or ClearCube Cloud Desktop OS.

Windows:

The thin client boots to the Administrator user account. The default Administrator password is **admin**. The default user password is **user**.

NOTE: Change administrator and user passwords immediately after logging in.

Cloud Desktop OS:

The CD8840 thin client boots to the user account and displays the Configuration Wizard the first time you power on the thin client. The default password is **admin** (case-sensitive).

NOTE: Change administrator password immediately after logging in. You can specify a new password using the Configuration Wizard (First-Time Wizard).

The First-Time Wizard

Cloud Desktop OS displays the First-Time Wizard the first time you power on a client or after a factory reset. This wizard lets administrators create connections quickly by specifying a minimum number of Connection attributes. After creating a Connection, administrators can edit and create additional Connections using the OS's Configuration application.

The section below shows each step in the **First-Time Wizard**.

First Connection

This section assumes you were powering on a client for the first time. The table below shows how to create a simple Connection and specify the administrator password.

Step	Action
1	Power on the thin client. Result: The thin client displays the BIOS splash screen then boots to the desktop. The First-Time Wizard starts and displays the Step 1 - Location and keyboard screen.
2	From the drop-down menus, select values for the Time zone, Country, System locale, and Keyboard layout fields.
3	Click Next . Result: The First-Time Wizard displays the Step 2 - Create a connection screen.
4	Click Mode to display a list of connection modes. Select the mode or protocol for the connection you are creating.
5	In the Target field, type the host name, URL, or IP address of the connection host or connection broker for the thin client.
6	Optionally, specify a group name in the Resource field if the host target is part of a resource group.
7	Optionally, select the Automatic start option to start the connection when the thin client is powered on.
8	Click Next . Result: The First-Time Wizard displays the Step 3 - Set administrator password screen.
9	Specify an administrator password. This is the password that administrators use to access the OS's Configuration application.
10	Click Finish . Result: The First-Time Wizard displays a success message and places a connection shortcut on the desktop. Click the Close button in the upper-right portion of the screen to close the First-Time Wizard. (Desktop Connection icons are enabled by default. You can change this setting from the Configuration application.)

Next step: The Connection is placed on the desktop and is available from the Start menu (see [Figure 4](#)). See the section below for information about starting a Connection. For more information about configuration options, see *Cloud Desktop OS Quick Start Guide*.

Wireless Network Setup

Connecting To Wireless Networks

Your CD8840 thin client includes an internal wireless radio (Wi-Fi) for wireless network connections. The table below shows how to connect to wireless networks (instructions assume that wireless network infrastructure is in place).

Step	Action
1	From Cloud Desktop OS, press CTRL+ALT+w on your keyboard. Result: a dialog box appears listing available wireless networks.
2	Click a wireless network listed in the Visible Wi-Fi networks area. Result: if a password is required, a dialog box appears. Otherwise, the thin client joins the wireless network
3	If a password is requested, enter the wireless network password in the Password text box (optionally, select Remember this network to log in automatically). Click Join to join the wireless network.

The picture and list below detail wireless options available from the list of visible networks.

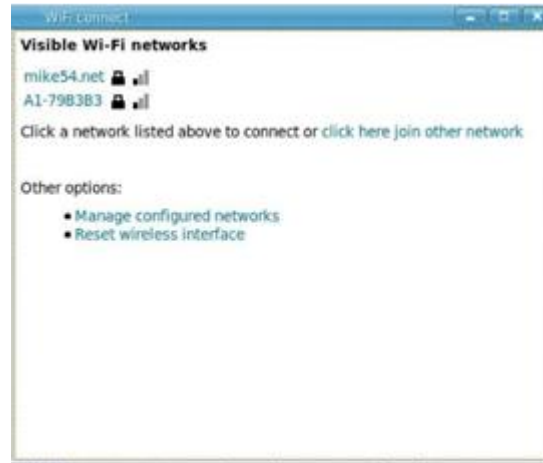


Figure 3. Visible Wi-Fi networks list and options

- **Connect to a hidden network**

Administrators can prevent networks from appearing in the list of networks displayed after pressing the network hotkey (**CTRL+ALT+w**). To connect to a network that is not displayed, click the **click here to join other network** link. Click the network to connect to, then type the network name (SSID) and password. (From the management menus, you can change or disable this hotkey.)

To disable this hotkey from Cloud Desktop OS, click **Input > Keyboard > Hotkeys**. Clear all values from the **Show and connect to available Wi-Fi networks** field, making sure that the field is empty. You can also change this and other hotkeys from the Cloud Desktop Management application.

- **Delete remembered networks**

Click **Manage configured networks** to display a dialog box containing remembered wireless networks. You can delete any network entries from this list.

- **Reset wireless interface**

If the thin client is experiencing wireless network issues, you can click this link to reset the wireless network adapter without restarting the thin client.

Wireless Network Setup, Continued

Starting a Connection

After creating a connection as shown above, users can start Connections from the Start menu or from a desktop icon (if desktop icons are enabled in the Configuration application). The picture below shows a Connection desktop shortcut and a Connection listed in the Session menu.

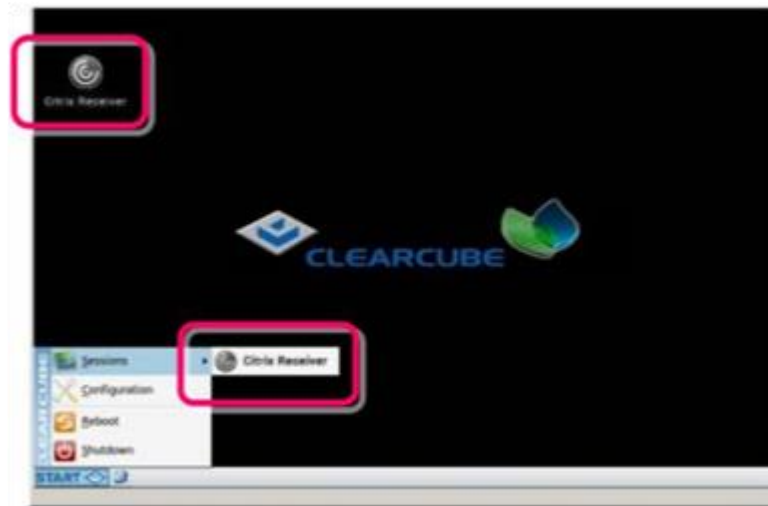


Figure 4. Connection (Sessions) shortcuts

The list below shows how to start a connection.

- Click **Start > Sessions**, and then select a **Connection**. (Alternatively, you can right-click an empty space on the desktop to display the Sessions menu.)

—OR—

- Double-click the Connection desktop icon.

Administrators can permit or prohibit Connection icons from appearing on the desktop. Click **Start > Configuration** and enter the administrator password. From the menu's **Management** area, click **Connections > edit**. Select an option from the **Icon on desktop** field.

Resources and Support

Additional Information

CD8840 User Guide shows how to configure, operate, and troubleshoot the CD8840 Thin Client.

Cloud Desktop OS Quick Start Guide describes how to configure, use, and deploy the Cloud Desktop operating system. All product documentation is available from the ClearCube Support site (see address below).

Contacting Support

Website: www.clearcube.com/support

Email: support@clearcube.com

Phone: (512) 652-3400

Toll-free: (866) 652-3400

WEEE Disposal Guidelines

In the European Union, this electronic product falls under the European Directive (2002/96/EC) WEEE. When it reaches the end of its useful life or is no longer wanted, dispose of it at an approved, designated recycling or treatment facility. Check with your local authorities for proper disposal instructions. For assistance, contact ClearCube at recycle@clearcube.com.

